



SKINCARE

THE POWER OF SIMPLE

Sometimes we complicate things.
We feel the need to dress it up,
add more or make it fancy.
When all along it is just perfect, as is.

Skincare should not be complicated.

*We believe skincare should be; nurturing to the skin,
easy to use, smell delicious and feel incredible...*

*We bring to you our botanical based skincare line.
Gentle, uncomplicated and extremely effective.*

*Our cleanser gently cleanses.
Our moisturizers really moisturize,
not too heavy, not too light.*

A WORLD CLASS PRODUCT LINE
— SIMPLE

A stylized, handwritten signature in white ink that reads "Vita".

President
Product Developer

EASY AS 1, 2, 3

1. CHOOSE YOUR SKIN TYPE
2. USE PRODUCTS DAILY
3. LOVE YOUR SKIN

OILY SKIN

Eye makeup remover p.m.

1. wash chamomile facial wash
2. exfoliate mint exfoliating facial polish*
3. tone botanical firming toner
4. firm firming face and eye serum
5. protect protective jojoba day moisturizer a.m & p.m.
6. mask mineral mud mask 1-2x per week
*exfoliate daily if no blemishes

COMBINATION SKIN

Eye makeup remover p.m.

1. wash chamomile facial wash
2. exfoliate mint exfoliating facial polish*
3. tone botanical firming toner
4. firm firming face and eye serum
5. protect protective jojoba day moisturizer a.m & p.m.
6. mask mineral mud mask 1x per week
*exfoliate 2-3x per week

DRY SKIN

Eye makeup remover p.m.

1. cleanse botanical cleansing lotion
2. exfoliate mint exfoliating facial polish*
3. tone botanical firming toner
4. firm firming face and eye serum
5. hydrate hydrating mango face cream a.m.
6. restore botanical face cream w/deep line complex p.m
7. mask mineral mud mask 1x per week
*exfoliate mix with cleansing lotion daily if desired

NORMAL TO DRY SKIN

Eye makeup remover p.m.

1. cleanse botanical cleansing lotion
2. exfoliate mint exfoliating facial polish*
3. tone botanical firming toner
4. firm firming face and eye serum
5. hydrate hydrating mango face cream a.m.
6. restore botanical face cream w/deep line complex p.m
7. mask mineral mud mask 1x per week
*exfoliate mix with cleansing lotion daily if desired

BOTANICAL INFO

NATURALLY GOOD FOR YOUR SKIN

Botanical refers to natural ingredients derived from plants that are beneficial to skin and are non-allergenic.

ALMOND OIL

Lighter than olive oil, it provides excellent lubricating and penetrating properties. Contains vitamins and minerals.

ALOE VERA

Is a bitter herb with anti-inflammatory properties. It is a cellular regenerator and has antibacterial effects. Aloe Vera gel can be applied to skin as a softening agent and has wonderful astringent qualities.

ANTIOXIDANTS

Believed to prevent and control numerous ailments by safeguarding cells against the ravages of unstable oxygen molecules called "free radicals".

AVOCADO OIL

Avocado Oil is a rich and extremely penetrating oil rich in vitamins A, D and E. Known as the youth mineral it contains more than 20% essential unsaturated fatty acids. It can help heal the skin, reduce age spots and sun damage. It increases collagen levels in the skin and is used for its moisturizing and nourishing compounds for dehydrated skin.

CHAMOMILE EXTRACT

Soothes irritated and problematic skin. It has flavonoids that can diminish skins blemishes and assist in healing.

CUCUMBER EXTRACT

A natural astringent. Helps tighten pores and imparts a soothing feeling. It is also an excellent anti-inflammatory and skin soother.

GRAPE SEED EXTRACT

Rich in flavonoids, phytochemicals that have antioxidant properties like Vitamin C and E.

JOJOBA OIL

The history of Jojoba is well documented. This thick waxy oil is also similar to sebum (human skin) and penetrates quite readily. Jojoba is an excellent moisturizer and offers cellular renewal.

JAPANESE GREEN TEA

Reported to fight damage from excessive sun and environmental damage. Primarily this ancient Asian plant has the ability to prevent free radicals from damaging cell structures further.

SHEA BUTTER

Derived from the karite tree of Africa, this thick "butter" has variety of skin benefits. Moisturizing and nourishing, some ability for cellular renewal and has a natural low level of UV protection for the skin.



AVAILABLE SIZES

PICK AND CHOOSE WHAT'S BEST



15ml 10ml 20ml 50ml 40ml 120ml 120ml 240ml 900ml cabine

remove		•			•		•		•
cleanse		•			•			•	•
wash		•			•			•	•
exfoliate						•	•		•
tone		•			•				•
protect		•			•	•			•
hydrate		•			•	•			•
restore		•			•	•			•
essential			•						
firm		•			•	•			
lighten		•			•	•			•
active	•								
mask						•			
nourish						•			•
intense				•					
anti aging				•					
soothe				•					•
shea				•					

SAMPLING MADE SIMPLE

IT'S AS EASY AS 1, 2, 3

Your customer wants to try a mini sample first before investing in a product line. We have three options to give your customer...



1 BLACK TESTER POTS

Your customer just wants a little sample.

SOLUTION

Our "Black Tester Pots".

We have a package of 25 little empty "Tester Pots" that you squeeze some product from your tester to give free to your customer to try once or twice. Easy take home bubbles with a hint of product.



2 MINI TUBES

Your customer wants to try more of one product.

SOLUTION

Our 10ml mini tubes.

These tubes contain 5 applications, which is a week's worth of product.



3 SAMPLER SET

Your customer would like to try the entire line, specially formulated for her skin type.

SOLUTION

Our mini sampler sets. Each designed for a specific skin type. Try the entire line before making the commitment OR perfect for a weekend travel set.

Contains 5, 10ml tubes.



new



40ml



120ml

REMOVE

OIL FREE EYE MAKE UP REMOVER

BEST FOR

All Skin Types

A soothing, non-irritating, oil-free formula that removes makeup from the delicate eye area. Leaves no oily residue. Fragrance free.

CONTAINS

- Cucumber Fruit Extract
- Chamomile Flower Extract
- Non-irritating
- Oil Free, leaves no residue
- Fragrance free
- Eye makeup can be re-applied instantly

AVAILABLE IN:

40ml / 120ml bottle

DIRECTIONS

Pour a small amount onto a cotton pad and gently wipe over entire eye area.

INGREDIENTS: De-Ionized Water, Disodium Cocoamphodiacetate, Vegetable Glycerin, Cucumis Sativus (Cucumber) Fruit Extract, Lactic Acid, Polysorbate 20, Tamarindus Indica Seed Extract, Chamomile Matricaria (Chamomile) Flower Extract, Phenoxyethanol and Caprylyl Glycol.



40ml



240ml

CLEANSE

BOTANICAL CLEANSING LOTION

BEST FOR

All Skin Types

A gentle mild cleansing milky lotion derived from Coconut and Sugar Beets. Contains Chamomile, Aloe, Cucumber and Japanese Green Tea to tighten, soothe and deliver antioxidants.

CONTAINS

- Chamomile
- Aloe Vera
- Cucumber
- Japanese Green Tea

AVAILABLE IN:

40ml / 240ml tube / 900ml cabine

DIRECTIONS

Pour a small amount into palm of hand and gently massage over wet or dry face. Rinse well. Pat dry. Can also be used to remove makeup. For deep cleansing, mix equal amounts of botanical cleansing lotion and exfoliating facial polish.

INGREDIENTS: De-Ionized Water/Aqua, Sodium Cocoamphoacetate, Decyl Glucoside, Sucrose Cocoate, Cocamide MIPA, Glyceril Stearate, Chamomilla Recutita (Matricaria) Flower Extract (Chamomile), Aloe Barbadensis Leaf Juice, Cucumis Sativus (Cucumber) Fruit Extract, Camellia Sinensis (Japanese Green Tea) Leaf Extract, Emulsifying Wax NF, Phenoxyethanol (and) Caprylyl Glycol, Fragrance.

900ml cabine

WASH

CHAMOMILE FACE WASH

BEST FOR

All Skin Types

A light foaming gentle gel face wash that is suitable for all skin types. Mild cleansing will leave your skin clean without harsh chemicals.

CONTAINS

- Chamomile
- Red Clover
- Elderflower Extracts
- White Willow Bark extract

AVAILABLE IN:

40ml / 240ml tube / 900ml cabine

DIRECTIONS

No need to wet face, gently massage over entire face. Rinse well. Use morning and night.

INGREDIENTS: Aqua, Alkyl Polyglucosides, Cocamidopropyl Betaine, Sodium Cocoamphoacetate, Acrylates Copolymer, Vegetable Glycerine, Salix Alba (White Willow) Bark Extract, Chamomilla Recutita (Matricaria) Flower Extract (Chamomile), Aqua (and) Trifolium Pratense (Red Clover) Extract, Sambucus Nigra (Elder) Flower Extract, Phenoxyethanol (and) Caprylyl Glycol.



40ml

240ml

900ml cabine

EXFOLIATE

MINT EXFOLIATING FACIAL POLISH

BEST FOR

All Skin Types

A gentle face polish with ingredients derived from sugar, for a mild deep cleanse. Apricot Oils smooth and clean skin without drying.

CONTAINS

- Apricot Oils
- Lemon
- Apple
- Aloe Vera
- Green Tea
- Sugar Cane
- Seaweed

AVAILABLE IN:

120ml tube / 900ml cabine

DIRECTIONS

Apply onto dry, cleansed skin. Rinse clean with water OR mix with botanical cleansing lotion to create a gentle cleansing exfoliator for the face. Use 2-3 times per week or as needed. Avoid eye area. Mature or dry skins can use daily.

INGREDIENTS: Aqua (Water), Decyl Glucoside, Polyethylene, Glycerin, Cocamide MEA, Cocamidopropyl Betaine, Glyceryl Stearate, Cetearyl Alcohol, Cetearyl Glucoside, Prunus Armeniaca (Apricot) Kernel Oil, Triethanolamine, Carbomer, Saccharum Officinarum (Sugar Cane) Extract, Citrus Medica Limonum (Lemon) Fruit Extract, Pyrus Malus (Apple) Fruit Extract, Camellia Sinensis Leaf Extract, Aloe Barbadensis Leaf Juice, Fucus Vesiculosus (Bladderwrack) Extract, Eucalyptus Globus Leaf Oil, Menthol, Parfum (Fragrance), Methylchloroisoethiazolinone, Methylisothiazolinone.



120ml

900ml cabine

TONE

BOTANICAL FIRMING TONER

BEST FOR

All Skin Types

A very gentle botanical toner containing Aloe Vera, Chamomile and Japanese Green Tea to rejuvenate the skin and Cucumber Extract to help tighten pores. Botanicals, extracts and marine minerals help promote skin firmness. Contains no alcohol.

CONTAINS

- Japanese Green Tea (to rejuvenate the skin)
- Chamomile Flower Extract
- Grapefruit Seed Extract
- Cucumber Extract (to tighten pores)
- Aloe Vera

AVAILABLE IN:

40ml / 120ml bottle

DIRECTIONS

Apply with a cotton pad or directly with your fingertips. Use on clean skin, before serum or moisturizer.

INGREDIENTS: De-Ionized Water/Aqua, Glycerin, Tamarindus Indica Seed Extract (Tamarind), Cucumis Sativus (Cucumber) Fruit Extract, Chamomile Recutita (Matricaria) Flower Extract, Aloe Barbadensis (Aloe Vera) Leaf Juice, Camellia Sinensis (Japanese Green tea) Leaf Extract, Quaternized Wheat Protein, Saccharomyces / Sea Salt Ferment (Biotin), Allantoin, Polysorbate 20, Disodium EDTA, Citrus Grandis (Grapefruit Seed Extract), Phenoxyethanol (and) Caprylyl Glycol, Fragrance.



40ml

120ml

PROTECT

PROTECTIVE JOJOBA DAY MOISTURIZER

BEST FOR

All Skin Types

A daily moisturizer with an excess of 18% oils of Jojoba, Avocado and Grape Seed, 2% Shea Butter, Vegetable Glycerin and Vitamin A. Provides a soft finish and ensures smooth makeup application.

CONTAINS

- 18% oils of Jojoba
- 2% Shea Butter
- 18% oils of Avocado
- Vegetable Glycerin
- 18% oils of Grape Seed
- Antioxidant Vitamin E

AVAILABLE IN:

40ml / 120ml tube / 900ml cabine

DIRECTIONS

Apply daily on cleansed and toned skin (after serum).

INGREDIENTS: De-Ionized Water, Aloe Barbadensis Leaf Juice, Persea Gratissima (Avocado Seed) Oil, Simmondsia Chinensis (Jojoba Seed) Oil, Vitis Vinifera (Grape Seed) Oil, Vegetable Glycerin, Caprylic/Capric Triglycerides, Butyrospermum Parkii (Shea Butter), Stearic Acid, Glyceryl Stearate, Cyclomethicone, Tocopherol, Cetyl Alcohol, Phenoxyethanol (and) Caprylyl Glycol, Fragrance.



40ml

120ml

900ml cabine



40ml

120ml

900ml cabine

HYDRATE

HYDRATING MANGO FACE CREAM

BEST FOR

Normal to Dry Skin

A daily hydrating cream containing the moisturizing properties of hyaluronic acid. Eases fine lines and smoothes skin surface with a slight "plumping" action. This velvety formula also contains a natural blend of 5 oils and exotic mango and Shea Butter, to increase skin elasticity and ease dryness.

CONTAINS

- Natural blend of 5 oils
- Olive
- Almond
- Avocado
- Sunflower
- Grape Seed
- Aloe Vera gel
- Exotic Mango Butter
- Shea Butter
- Antioxidant Vitamin E

AVAILABLE IN:

40ml / 120ml tube / 900ml cabine

DIRECTIONS

Apply daily on cleansed and toned skin (after serum). Day and night.

INGREDIENTS: Aloe Barbadensis Leaf Juice, Butyrospermum Parkii (Shea Butter), Mangifera Indica (Mango Butter) Seed Oil, Olea Europaea (Olive) Oil, Prunus Dulcis (Almond) Oil, Persea Gratissima (Avocado) Oil, Helianthus Annuus (Sunflower) Seed Oil, Vitis Vinifera (Grape) Seed Oil, Caprylic /Capric Triglycerides, Vegetable Glycerin, Sodium Hyaluronate, Palm Stearate, Glyceryl Stearate, Cetyl Alcohol, Tocopherol, Cyclomethicone, Triethanolamine, Phenoxyethanol (and) Caprylyl Glycol, Fragrance.



40ml

120ml

900ml cabine

RESTORE

BOTANICAL FACE CREAM WITH DEEP LINE COMPLEX

BEST FOR

Normal to Dry/Sensitive Skin

A velvety, emollient cream for skin that requires more oils without a greasy feel. Extremely mild, excellent for sensitive skins.

CONTAINS

- Jojoba
- Avocado
- Aloe Vera Gel
- Grape Seed Oils
- Green Tea
- 4% African Shea Butter
- Antioxidant Vitamin E

AVAILABLE IN:

40ml / 120ml tube

DIRECTIONS

Apply daily on cleansed and toned skin (after serum). Day and night.

INGREDIENTS: De-ionized Water, Aloe Barbadensis Leaf Juice, Persea Gratissima (Avocado Seed) Oil, Simmondsia Chinensis (Jojoba) Seed Oil, Vitis Vinifera (Grape Seed) Oil, Vegetable Glycerin, Butyrospermum Parkii (Shea Butter), Caprylic/Capric Triglyceride, Squalane, Olea Europaea Olive Extract, Palm Stearate, Glyceryl Stearate, Cyclomethicone, Dioscorea Villosa (Wild Yam) Root Extract, Glycine Soja (Soybean) Sterols, Palmitoyl Pentapeptide-3, Cucumis Sativus (Cucumber) Fruit Extract, Vitis Vinifera (Grape) Fruit Extract, Bladderwrack, Saccharomyces/Sea Salt Ferment, Paullinia Cupana (Guarana) Fruit Extract, Chamomilla Recutita (Matricaria) Flower Extract (Chamomile), Vegetable Glycerin, Camellia Sinensis (Japanese Green Tea) Leaf Extract, Quaternized Wheat Protein, Ganoderma Lucidum (Mannentake Mushroom) Extract & Lentinus Edodes (Shiitake Mushroom) Extract & Algae Extract, Tocopherol, Cetyl Alcohol, Phenoxyethanol (and) Caprylyl Glycol, Fragrance.

ESSENTIAL

OMEGA 3 FACE SERUM



20ml

BEST FOR

Normal to Dry Skin

A light weight oil containing powerful moisturizing agents packed with nutrients. A velvet mattifying effect with no greasy after feel. All natural, cold pressed cranberry seed oil with high antioxidant levels makes this an excellent moisturizer with superior skin conditioning properties.

CONTAINS

- Macadamia Oil
- Passion Fruit Oil
- Omega 3
- Omega 6
- Omega 9 (fatty acids)
- Cranberry Seed Oil
- Sweet Almond Oil
- Avocado Oil

AVAILABLE IN:

20ml bottle

DIRECTIONS

Apply to face and neck area, after toner, before moisturizer at night.

INGREDIENTS: Persea Gratissima (Avocado) Oil, Macadamia Terrifolia Seed Oil, Prunus Amygdalus Dulcis (Sweet Almond) Oil, Passiflora Edulis Seed Oil, Glycine Soja (Soybean) Oil, Tocopheryl Acetate, Vaccinium Macrocarpon (Cranberry) Seed Oil, Fragrance.

FIRM

FIRMING FACE & EYE SERUM



40ml

120ml

BEST FOR

All Skin Types

An oil-free, multi-benefit serum that improves the skin's appearance. Helps prevent visible signs of aging. Specifically effective in reducing dark circles under eyes as well as, firming and tightening the entire eye area. After 2-4 months of use, skin looks firmer, smoother. Fragrance free.

CONTAINS

- Aloe Vera Gel
- Vegetable Glycerin
- Cucumber Fruit Extract
- Peptides

AVAILABLE IN:

40ml / 120ml tube

DIRECTIONS

Apply on clean skin morning and night, before moisturizer.
Massage a few drops gently into skin and allow to dry.

INGREDIENTS: De-ionized Water, Aloe Barbadensis Leaf Juice, Vegetable Glycerin, Cucumis Sativus (Cucumber) Fruit Extract, Chrysin, Palmitoyl Oligopeptide, Hydroxysuccinimide, Palmitoyl Tetrapeptide-3, Palmitoyl Pentapeptide-3, Steareth-20, Polysorbate- 20, Carbomer, Diazolidinyl Urea, Tetrasodium EDTA.



40ml

120ml

900ml cabine

LIGHTEN

BOTANICAL LIGHTENING CREAM

BEST FOR

All Skin Types

A botanical based moisturizing cream containing Sophora Flavescens and Kiwi Root, targets specific pigmentation problems. A mango based moisturizer that evens out skin tones. (Not to be confused with a bleaching cream). We include 5 natural oils along with aloe, Vitamin E and Cucumber Extracts to enrich the skin.

CONTAINS

- Sophora Flavescens
- Kiwi Root
- Natural Oils of:
Avocado, Grape Seed, Sweet Almond, Olive, Sunflower, Shea Butter, Mango Butters, Aloe Vera, Vitamin E, Cucumber Extracts.

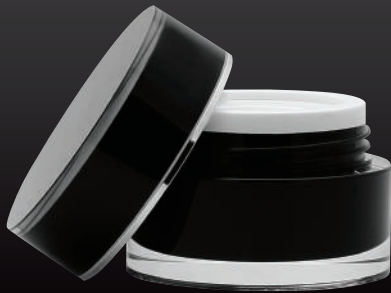
AVAILABLE IN:

40ml / 120ml tube / 900ml cabine

DIRECTIONS

On cleansed skin, use daily as a moisturizer.

INGREDIENTS: Water/Aqua, Actinidia Chinensis (Kiwi) Fruit Extract, Sophora Angustifolia Root Extract, Olea Europaea (Olive) Fruit Oil, Prunus Amygdalus Dulcis (Sweet Almond) Oil, Persea Gratissima (Avocado) Oil, Helianthus Annus (Sunflower) Seed Oil, Vitis Vinifera (Grape) Seed Oil, Caprylic /Capric Triglyceride, Diacetyl Boldine, Butyrospermum Parkii (Shea Butter), Mangifera Indica (Mango) Seed Oil, Glycerin, Stearic Acid, Glyceryl Stearate, Cucumis Sativus (Cucumber) Fruit Extract, Cetyl Alcohol, Aloe Barbadensis Leaf Juice, Tocopherol, Phenoxyethanol, Caprylyl Glycol, Fragrance.



15ml

ACTIVE EYE CREAM

BEST FOR

All Skin Types

A tightening cream formula enriched with actives that help improve the appearance of fine lines. A water resistant silky gel/cream texture that applies like silk and quickly absorbs into the skin. Provides long lasting moisture for hours.

CONTAINS

- Albizia Julibrissin Bark Extract
- Spilanthes Acmella Flower Extract

AVAILABLE IN:

15ml jar

DIRECTIONS

Apply daily, morning and night.

INGREDIENTS: Aqua, Glycerin, Dimethicone, C12-15 Alkyl Benzoate, Butyrospermum Parkii, Caprylic/Capric Triglyceride, Sucrose Stearate, Sucrose Distearate, Cera Alba, Cetearyl, Glucoside, Cetearyl Alcohol, Albizia Julibrissin Bark Extract, Sodium Acrylate/Sodium Acryloyldimethyl Taurate Copolymer, Isohexadecane, Polysorbate 80, Sodium Hyaluronate, Tribehenin, Phenoxyethanol, Hydroxyacetophenone, 1,2-Hexanediol, Caprylyl Glycol, Sodium Polyacrylate, Tetrahexyldecyl Ascorbate, Tocopheryl Acetate, Panthenol, Spilanthes Acmella Flower Extract.



120ml

MASK

MINERAL MUD MASK

BEST FOR

All Skin Types

An incredible mix of pure arctic mineral mud, containing no fillers. Unique toning mask to detoxify skin, leaving a baby smooth feel. The mud works by pulling out impurities from the skin. Leaves skin feeling beautifully firm after just one application.

CONTAINS

- Pure Arctic Mineral Mud
- Grape Seed Oil
- Avocado Oil
- Jojoba Seed Oil
- Shea Butter
- Aloe
- Vitamin E
- Allantoin

AVAILABLE IN:

120ml tube

DIRECTIONS

Apply with a brush or fingers and wait 20 minutes to dry. Rinse thoroughly. Avoid contact with eyes.

INGREDIENTS: De-ionized Water, Mineral Clay, Vitis Vinifera (Grape Seed) Oil, Persea Gratissima (Avocado) Oil, Caprylic/Capric Triglycerides, Emulsifying Wax NF, Glyceryl Stearate, Simmondsia Chinensis (Jojoba) Seed Oil, Butyrospermum Parkii (Shea Butter), Aloe Barbadensis Leaf Juice, Palm Stearate, Tocopherol, Silk Amino Acids, Vegetable Glycerin, Methyl Cellulose, Allantoin, Phenoxyethanol (and) Caprylyl Glycol.



120ml

NOURISH

LUXURIOUS HAND CREAM

BEST FOR

All Skin Types

A lightly scented, non greasy, quick absorbing hand cream that provides the ultimate level of hydration and nourishment. Complete with Botanical Oils and Vitamins.

CONTAINS

- Avocado Oil
- Grape Seed Oil
- Shea Butter
- Vitamin A, C, D and E

AVAILABLE IN:

120ml tube / 900ml cabine

DIRECTIONS

Apply on the hands as needed.

INGREDIENTS: De-ionized Water, Vitis Vinifera (Grape) Seed Oil, Persea Gratissima (Avocado) Oil, Caprylic/Capryllic Triglycerides, Emulsifying Wax NF, Glyceryl Stearate, Simmondsia Chinensis (Jojoba) Seed Oil, Butyrospermum Parkii (Shea Butter), Aloe Barbadensis (Aloe) Leaf Juice, Palm Stearate, Retinal Palmitate (Vitamin A), Ascorbic Acid (Vitamin C), Ergocalciferol (Vitamin D), Tocopherol (Vitamin E), Silk Amino Acids, Vegetable Glycerine, Sorbeth-40 (Sorbitol), Cyclomethicone (Silicone), Methyl Cellulose, Allantoin, Phenoxyethanol, Caprylyl Glycol, Fragrance.



INTENSE

HYALURONIC MOISTURIZER

BEST FOR
Dry Skin

A rich moisturizer, that may help the elasticity and moisture content of the skin.
Leaves no oily residue, just soft smooth skin.

CONTAINS

- Hyaluronic Acid
- Tamarindus Indica Seed Gum
- Wild Yam Root Extract
- 4% Shea Butter
- Vitamin E

AVAILABLE IN:

50ml jar

DIRECTIONS

Apply to cleansed skin, morning and night.

INGREDIENTS: Deionized Water, Aloe Barbadensis Leaf Juice, Butyrospermum Parkii (Shea Butter), Helianthus Annuus (Sunflower) Seed Oil, Vegetable Glycerine, Emulsifying Wax NF, Glyceryl Stearate, Squalane, Caprylic/capric triglyceride, Sodium Hyaluronate, Stearic acid, Dioscorea Villosa (Wild Yam) Root Extract and Glycine Soja (Soybean) Sterols, Tamarindus Indica Seed Gum, Dimethicone, Mixed tocopherols, Allantoin, Xanthan Gum, Phenoxyethanol and Caprylyl Glycol (Optiphen).



ANTI AGING

MOISTURIZER WITH COLLAGEN AND OATMEAL

BEST FOR
Dry Skin

A soothing combination of natural oils and emollients. Oatmeal soothes and calms irritated or sensitive skins. A rich moisturizer that provides a smooth skin feel without greasiness.

CONTAINS

- Collagen
- Aloe
- Colloidal Oatmeal
- Vitamin E

AVAILABLE IN:

50ml jar

DIRECTIONS

Apply to cleansed skin, morning and night.

INGREDIENTS: Deionized Water, Aloe Barbadensis Leaf Juice, Caprylic/capric triglyceride, Ethylhexyl Palmitate, Vegetable Glycerine, Dimethicone, Diastearyl Dimonium Chloride, Glyceryl Stearate, Cetyl Alcohol, Colloidal oatmeal, Mixed Tocopherols, Phenoxyethanol and Caprylyl Glycol (Optiphen).



SOOTHE

HAND/FOOT/CUTICLE PROTECTION

BEST FOR

All skin types

An intense moisturizer for very dry skin on hands, cuticles and feet.
Leaves no greasy residue. Improves softness to cuticles and callouses.

AVAILABLE IN:

50ml jar / 900ml bottle

DIRECTIONS

Apply daily.

INGREDIENTS: Deionized Water, Aloe Barbadensis Leaf Juice, Vegetable Glycerine, Canola oil (and) Silica (and) Zea Mays (Corn) Starch, Persea Gratissima (Avocado) Oil, Cetearyl Alcohol (and) Ceteareth-20, Cetyl Alcohol, Ricinus Communis (Castor) Seed Oil, Stearic Acid, Chamomilla Recutita (Matricaria) Flower Extract, Mixed tocopherols, Phenoxyethanol and Caprylyl Glycol (Optiphen).



SHEA

BODY BUTTER

BEST FOR

All skin types

A gorgeous body butter, that goes on thick and creamy.
Rich in natural triglycerides (fats) and uses 8% fair trade shea butter.

CONTAINS

- Sunflower Seed Oil
- Jojoba Seed Oil
- Aloe Leaf Juice
- Chamomile Flower Extract

AVAILABLE IN:

50ml jar

DIRECTIONS

Apply to dry areas of body.

INGREDIENTS: Helianthus Annuus (Sunflower) Seed Oil, Soja Hispida (Soybean) Oil, Deionized Water, Natural Beeswax, Simmondsia Chinensis (Jojoba) Seed Oil, Emulsifying Wax NF, Sodium Borate, Aloe Barbadensis Leaf Juice, Chamomilla Recutita (Matricaria) Flower Extract (Chamomile), Phenoxyethanol and Caprylyl Glycol (Optiphen).

SKINCARE PRE-SET 1

CUSTOMIZABLE MAKEUP CENTRE



- 40ml remove
- 40ml cleanse
- 40ml wash
- 120ml exfoliate
- 40ml tone
- 40ml firm
- 40ml protect
- 40ml hydrate
- 40ml lighten
- 40ml restore



- 120ml firm
- 120ml protect
- 120ml hydrate
- 120ml lighten
- 120ml restore



- 240ml cleanse
- 240ml wash
- 120ml remove
- 120ml tone
- 20ml essential
- 120ml mask
- 120ml nourish
- 240ml rejuvenate

SKINCARE PRE-SET 2

CUSTOMIZABLE MAKEUP CENTRE



- 40ml remove
- 40ml cleanse
- 40ml wash
- 120ml exfoliate
- 40ml tone

- 40ml firm
- 40ml protect
- 40ml hydrate
- 40ml lighten
- 40ml restore

- 240ml cleanse
- 240ml wash
- 120ml remove
- 120ml tone

- 20ml essential
- 120ml mask
- 120ml nourish
- 240ml rejuvenate

SKINCARE DISPLAYS



OUTERCASE M
LEDGE INSERT MSK (2X)



L-SHAPE SIGN MLSSH
LEDGE INSERT MSK

- 5 skincare tubes or bottles



LEDGE INSERT MSK

- 5 skincare tubes or bottles



1-STEP DISPLAY
BB CREAM M1S

- Feature selected skincare products



BENTON COUNTER
DISPLAY MLSC

- 5 skincare tubes or bottles



LEDGE INSERT MSK

- 5 skincare tubes or bottles