

# pinnacle cosmetics

professional private label

P.R.O.D.U.C.T



# about us

Pinnacle Private Label Cosmetics specializes in amazing products, fabulous quality and unbelievable colour selection.

No gimmicks. No minimums - get what you want, when you want it. Simple. We introduce 4 annual colour stories - Spring, Summer, Fall & Holiday Collections.

Should you require assistance with shade selection, we have put together a listing of our bestsellers - You can view them in our Colour Catalogue. Call today to arrange to see all our products in person. Book an appointment to visit our showroom.

All products come individually black boxed complete with ingredient listing.

All products are:

- Made in Canada\*
- Allergy tested
- Hypoallergenic
- Non-comedogenic
- Fragrance Free

Dare to be different

Create a line with your name on it.

I did...

A stylized, handwritten-style logo for 'Vista' in white script, set against a dark background with a repeating floral pattern.

\*except pencils and brushes

# private labeling



## private labeling

create your own line!

Quantities: **NO MINIMUMS**

Start Up Costs: One time plate charge \$160.00

Print Charges: \$25.00 set up fee per order plus  
\$0.25 per container

Payment: Full payment is required prior to printing.

Delivery: Please allow 2-3 weeks for first order.  
This allows time to create the plate, obtain  
customer approval, produce stock & deliver.

# start me up

## 7pc sampler

- lipstick
- lipgloss
- eyeshadow
- blush
- camera ready primer
- liquid foundation
- dual powder

## or 4pc mineral



easy as...

1

still doing your  
homework?

order a  
sampler set

\$60

2

want to choose  
your colours?

- visit showroom
- visit website
- call us

3

ready to place  
an order?

pick any  
pre pack save

5%

# skin care

Offer your own private label line.  
Our unique, high-quality skin care allows you to own your own brand of spa-professional products.

The simple fact that your product is exclusive means it's a part of an experience that cannot be replicated anywhere else.

When clients use your private label product they see your spa's name every morning and night. It is like having your business card taped to their mirror.

We will print the bottles and tubes, as well as the outer boxes.



## no minimums - now let`s get started

- Oil free eye makeup remover
- Botanical cleansing lotion
- Mint exfoliating facial polish
- Botanical firming toner
- Protective jojoba day moisturizer
- Hydrating mango face cream
- Botanical night cream
- Firming face & eye serum
- Mineral mud mask
- Omega 3 hemp body lotion
- Luxurious hand cream

# lips

## lipstick •••

Lipsticks are enriched with Vitamin E which has soothing and healing properties, 5 formulas available - shine up with metallics, hi-gloss, (super shiny) pearlized and super smooth creamy satins.



## glossware •••

Formulated to give extreme shine with a stay put application slightly tacky therefore long lasting - fragrance free and Paraben free with Vitamin E added. Glossware lipgloss stays on longer than any other lipgloss and retains its colour. Our top selling product category.

## lip glaze •••

A hi shine gloss. Developed for women who do not want a tacky feel. This formula is more "slippery". Glides on sheer and glossy, and more lightweight than our glossware formula and is also Paraben free. Feels as good as it looks. A fruit berry extract added is mouthwatering.



## luxeware •••

Our newest obsession, a super high shine lipgloss with Diamond like sparkle. Not your average pearliest shine, we are talking megawatt. We call it "the power booster". Great options: Our duo container has two luxeware glosses in one package. Smart thinking!

## luxeware extreme •••

Over the top shimmer and shine, more intense than luxeware.

# lips

## lipgloss quad •••

Formulated to give extreme shine with a stay put application slightly tacky therefore long lasting - fragrance free and Paraben free with Vitamin E added. Glossware lipgloss stays on longer than any other lipgloss and retains its colour. Our top selling product category.



## lip lacquer •••

Lipstick and lipgloss in one. Part lipstick, part gloss. A uniquely textured lip colour packed with a pigmented punch. A creamy yet lightweight luxurious colour and scandalous shine. Wear alone or tone it down with any lipstick on top, for a subtle red. Always use a lipliner to define and prevent feathering.

## mentha lip balm •••

Lips stay protected with our mint infused lip balm. Hi-shine, hi-gloss with a refreshing cool minty sensation. Peppermint oil helps give breath long lasting freshness. A clear balm that shines like a lipgloss. Wear alone or on top of lipstick.



## cherry bomb duo •••

### lip & cheek stain

Creates a love affair between lips and cheeks. 2 colour tones, working with all complexions. Cherry Bomb won't rub off. Applies sheer and translucent, so you can build colour. Lightweight and easy, no glitter or shine.

# lips & eyes

## lip pencils •••

Premium quality pencils manufactured in Germany.  
A hypo-allergenic formula which treats sensitive eyes, lips and brows with care.



## mechanical pencils lip & eye •••

Creamy smooth textures in a water proof formula. Mechanical technology mean never having to sharpen these babies.

\*Always tighten cap...they will dry out if you don't!

## eyeshadow •••

Eyeshadows are available in three textures, flat matte, creamy pearlized and super frost. Using only the finest micro powders available, allowing the creation of shadows that can be easily blended and long wearing. A superior quality eyeshadow in an extensive colour range. 150 wearable colours to choose from, that blend simple with sophisticated.



## hi def pigments •••

High performing pigments with crystals of shine.  
Apply as an eyeshadow, using a shadow brush,  
or as an eyeliner, with NEW trans-fix eyeliner transformer.





# eyes

## mineral shadow •••

Pure pigments, never diluted just intense pigment power. Use as eyeshadow or apply with "trans-fix" and use as a liquid eyeliner. Apply on top of lips with gloss skin tone shades, use on t-zone, cheeks, temples, shoulders. Captain fantastic.



## star crystals •••

Loose Glitter Crystals that sparkle, sparkle, sparkle, like superfine diamond crystals. The ultimate in glamour & glitz. Apply as is - or mix with our "Trans-fix" transformer. Apply to face, body or hair.



## cream eye shimmer •••

Glow crazy - supernova shades-use as a cream eyeshadow or try as a highlight anywhere you want a pop of glimmer. These eye shimmers have more colour & coverage than Face Hiliters. Game changer... Use as a shadow base to give incredible intensity - gold over gold, pink over pink, you get the idea...



## cream gel eyeliner •••

These smudge like liners fit between shadow and a liquid. \*\*\*Airtight container, keep lid on tight to avoid dry-out. Delivers a long lasting smoky or clean look. To get smoky smudge effect-smudge with finger or brush, 7 smoky shades available.



# eyes

## lashware mascara •••

A water resistant, lengthening cream formula, (not waterproof) smudge proof and fiber free with no plastics or sealers. A mascara that will not irritate sensitive eyes, including those of contact lens wearers. Available in black , brown , navy, brite blue and clear. Dramatizes eyes with fuller, curlier, visibly longer lashes.

## intense lash mascara •••

Intense lash provides increased volume up to 60% and curling up to 50% in one quick, clump-free, water resistant application. This Mascara is formulated with mineral fine powder to make lashes fuller and more plentiful. Intense lash is formulated with Vitamin A, C and E to keep lashes supple. This mascara is formulated to work overtime, with natural polymers to stretch and hold lashes in shape for over 12 hours. Safe for sensitive eyes.



## trans - fix •••

Hundreds of different eyeliner shades in one bottle. A glycerin solution magically transforms any eyeshadow or loose pigment into a smudge proof liquid liner. Dip the brush along outer rim of powder for a perfect line.

## glitter liner •••

Quick drying -fine line for endless cocktail party chic, subtle enough for day-va-voom enough for night. Apply in a single line above eyeliner or close to base of lashes over entire lid, for evening glam. Can be mixed with gloss and makes lips sparkle.



# eyes

## liquid eye liner •••

Luxury liners 5 amazing shades with a pen like applicator. The ultimate drama. Quick drying, absolutely amazing and hypo-allergenic.

## define liquid eyeliner •••

Colour your world in rich deep grow up shades. Quick-dry, instant glam - re-think the cat's eye in any of the 6 colours available - even metallic, gold and silver.



## eye pencil •••

Premium quality pencils manufactured in Germany. A hypo-allergenic formula which treats sensitive eyes, lips and brows with care.

## sheer glo •••

An Incandescent Liquid that lights up skin with all over radiance. Mix with foundation or wear alone - great for all skin types. 3 shades in cool, warm and sheer pink Gives a luminous glow to all skins. Especially amazing for mature/dry skins, replaces youthful glow - sheer genius. Use on face and/or body. Get Glowing.



# cheeks

## blusher •••

Powder blush comes in two textures, matte and pearlized. A special light texture which glides on smoothly and evenly.



## bronzer compact •••

This is no ordinary bronzer, Pressed powder compact provides a sunny disposition with a bronzer that works for all skin tones. An extra fine texture in flattering shimmer colours. 5 Shades available, 4 pearlized, 1 matte. #407 works with most cool neutral skin tones, - never goes on orangey. #200 - works with olive, yellow based skin tones. #300 - matte toned for any skin tone that does not want shimmer. #400 - the richest, deepest tone.



## ballerina pink •••

A finely spun press powder with delicate mauves & pinks that leaves a petal like finish to the skin. Dust lightly on temples, bridge of nose, cheeks, chin, use large powder brush.



## cream face hilites •••

Get glowing with a subtle shine cream formula - use as a face or body shimmer, these are not as pearlized as the eye shimmer. Apply with foundation brush. If you're pale, go for a silvery shimmer (#50 fantasy) If you're medium go for peachy(#55 flirty) If you're darker or very tan go for the gold (#56 Hi-glow)



# cheeks & foundation

## spot lights •••

Super sexy pressed powder cakes that turn on the glamour. Brush on the cheekbone, collarbone, anywhere to add subtle shimmer.



## colour pots •••

Dewy creamy colour for the cheeks. No shimmer here, just dreamy colour. Sheer beauty with a "pop" of colour—apply with foundation brush or fingertips. These give a gorgeous natural finish, especially compatible with dryer skins, not for oily.



## face makeup •••

A liquid water based non-comedogenic formula containing Vitamin E, light to medium coverage. It blends perfectly and never streaks or cakes. A lightweight formula that helps camouflage skins imperfections. Contains Wheat Germ, which improves skin's elasticity and help skin blemishes. Perfect for even the most sensitive skins.

## cover up & concealer trio •••

17 shades, in a cream to powder formula This moisture enriched formula blends easily to hide skin imperfections. 9 yellow-warm based shades and 8 neutral cool based shades available. Applies creamy and sets as a powder for extremely long staying power.



# foundation

## dual powder • • •

Our Dual Powder can be used in many ways, hence the word DUAL. It can be worn alone for a light makeup application or "on top of your foundation" for complete coverage.

Dual Powder can be used as a foundation when applied with a dampened sponge.

We recommend this for oily-combination skins.

Dryer skins use it best dry.



## loose powder • • •

Used to blend and set your make-up. Powder that glides on and will not cake or clog pores (non-comedeogenic). Gives natural light treatment finish. These powders can be worn alone or over makeup. They absorb oils and smooth imperfections. Should be applied with a powder brush. Oil absorbing powders have been used to create these products.



## cream finish foundation • • •

In a compact- a full coverage formula- use a foundation brush to apply. 19 shades, in a cream to powder formula. This moisture enriched formula blends easily to hide skin imperfections.

9 yellow-warm based shades and 10 neutral cool based shades available. Applies creamy and sets as a powder for extremely long staying power. Apply with foundation brush, or fingertips.



## corrector wheel • • •

Our Colour Correctors in a handy Quad container or stick.

Say "Bye Bye" to bluish dark circles under eyes with mellow yellow. Red blotches are "Outta Here" with green. "Ciao Baby" to dull grey skin with mauve. "Think Pink" - highlights and brightens.

Apply with pinky finger or Spot Concealer Brush #11.



# primers

## invisible blotting powder • • •

This outstanding powder can be used alone for weightless oil control or over foundation to set makeup. Shine no more with this invisible, lightweight, oil blotting powder. Apply to areas of face that are prone to shine for a satin finish without cakiness.

## camera ready • • •

Our top Selling Product; A makeup base that gives a matte, silky smooth finish. Camera Ready is what you need to keep your makeup in place All day. The most important complexion product. Apply a small amount to clean skin. Minimizes the appearance of fine lines, smoothes skin texture and keeps foundation in place.



## lash primer • • •

dye free -fragrance free

It is all about volume with this lash plumper. Creates a fierce flutter. Developed to nourish and enhance lashes. Creates a base coat that amplifies mascara's effects. Can be worn alone at night as a conditioner. How to use: apply one coat and let set for 30 seconds. Repeat with second coat.

Let dry for 30 seconds and apply mascara.

## prime time eye & lip primer • • •

Eye Primer for the longest wearing eyeshadow, apply directly to eyelids, with fingers or sponge. Only a very thin coat is necessary. You are ready for your eyeshadow to last and last. Primer is for anyone who has trouble with eye make-up smudging, wearing off or blending unevenly. Lip primer prevents feathering and keeps lipstick or gloss from fading and changing colour. Apply a very thin layer with fingers or sponge and blend beyond the line of lips. Now you're ready for lipstick or gloss.



# minerals

## mineral pressed bronzer •••

Sun kissed beauty in a mineral powder formula "TALC FREE"  
Dust on lightly with our kabuki brush for a beach baby glow.  
The only safe tan is a fake tan.



## mineral foundation jar & wand •••

A weightless soothing powder that gives a flawless coverage.  
Perfect for sensitive skins. You build the coverage in areas you  
need. Long lasting, perfect for all skin types.



## finishing minerals mattifier •••

This mineral formula is lightweight and acts as a mattifier. It  
removes any shine that is not desired. Can be worn alone or after  
application of mineral foundation. Keeps forehead, nose, and  
chin matte and shine free.



## mineral icing sugar jar & wand •••

Face and Body Shimmer Dusting Powder. High shine the finest pearl powders  
used in this formula. A light touch for all out glimmer apply to cheeks, collar-  
bone - anywhere you want to shine. High shimmer for face and body.





# minerals

## mineral bronzer jar & wand...

Sun kissed beauty in a mineral powder formula "TALC FREE".  
Dust on lightly with our kabuki brush for a beach baby glow.  
The only safe tan is a fake tan.



## mineral pressed eyeshadow...

Available in 21 classic best selling shades. Talc free, fragrance free. Large size shadow pan in a mirrored compact. Easy to apply and blend flawlessly.



## mineral pressed blush...

9 top selling colours in a Mineral formula. Talc free, fragrance free. These complexion-boosting minerals give flattering face colour that leaves you with radiance that looks like it comes from within- now that's real beauty-naturally!



## mineral pressed foundation...

Our 9 top selling shades now in new mineral pressed foundation. All the properties of our loose mineral foundation, now in a gorgeous compact with mirror. Silky application adheres to skin, giving spectacular coverage. **FLAWLESS!**



## lips &amp; eyes

6 well blush

6 well mineral

5 well shadow



8 well blush/bronze &amp; shadow

11 well shadow



# brow beauty



5 well 'brow pallet'

new  
poster



Cityscape display with sign holder 5x7



hi-brow shadows  
available in a range of colours  
for lids, lining eyes and defining  
brows. A matte silky formula  
glides on smooth, and blends  
beautifully

m2s - 2-step visionary display

also available duo sets: 701-blonde, 702-dark brunette,  
704-ash brown, 705-auburn, 706-golden brown

# brow & stencil kit

always perfect brows



2pc-refillable  
pallet contains

- 1 brow shadow
- brow wax
- 2 brushes
- 6 stencils



Now a kit available for easy, mistake proof perfectly arched brows. Kit contains 6 different stencil styles + 2pc pallet with brow shadow, wax and brush



mlgs  
visionary display

new

< brow visionary display

- feature stencils
- brow shadows
- brow brushes
- brow pencils
- 5 well or brow shadows
- brow wax
- brow fixx and brow ware

# brow beauty

## accessories

**brow ware**  
The must have clear gel that controls and shapes brows into perfect place. Easy to use. also can be used as a clear mascara



**brow fix**  
A creamy-gel formula. Easily fills in and defines brows. A stay put fix, that controls and shapes brows. Brow fix also is amazing for instant hair touch ups—cover grey!



< tools of the trade...  
Double duty angle brow fills in thin or sparse brows, and soft lines. Spoolie and lash brow groomer, tame and comb brow hair into position

Portable and convenient ... >  
these blendable pencils help give a natural look. Easy to use for feather like strokes of colour. Use before or after hi-brow shadow



## brushes

## artist brush line...



#1 #2 #3 #4 #5 #6 #8 #9



#10 #11 #12 #13 #14 #15 #16 #17

## brushes

## artist brush line...

large shadow squirrel



#18

small fluff pony



#20

large fluff pony



#21

kabuki brush medium



#22

bent eyeliner brush goat



#26

lip pull up brush nylon



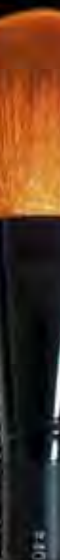
LPU

powder brush retractable synthetic



PBR

mineral powder



#40

mineral buffer



#41

mineral concealer



#43

mineral baby buki



#44

Portable and convenient ...these blendable pencils help give a natural look. Easy to use for feather like strokes of colour. Use before or after hi-brow shadow

#44

... mineral vegan

# brush sets

## 14pc brush set...

powder  
 blush  
 shadow shader  
 shadow blender  
 concealer  
 flat liner  
 precision crease shadow  
 mini smudger shadow  
 angle liner  
 spot concealer  
 flat lip  
 fine pointed eye liner  
 spoolie  
 lash n` brow groomer



14 piece brush set with matte black handle brushes.  
 \*Brush carry case can also be purchased seperately,  
 to create your own selection of brushes.

## 6pc brush set

flat shader  
 sponge tip applicator  
 blush  
 large shadow  
 angle shader  
 lip brush



6 piece brush set carry case.  
 Matte black handle brushes.  
 All in a black carry case.



# accessories



## DISL lip brushes disposable (25pk)

A nylon lip brush with black handle.  
A must for lipstick demonstrations.  
Approximate length: 3 1/4 in.  
25 pieces per pack.



## DISG lipgloss wands disposable (50pk)

A doe foot lipgloss applicator, black handle.  
A must for lipgloss applications.  
Approximate length: 4 in.  
50 pieces per pack.



## DISM mascara wand disposable (25pk)

A full head mascara brush, with black handle.  
Perfect for all mascaras.  
Approximate length: 4 1/4 in.  
25 pieces per pack.



## AP shadow applicators black tip (25pk)

An all black single foam tip eyeshadow applicator.  
Approximate length: 1 3/4 in.  
25 pieces per pack.



## SPA plastic spatula plastic (25pk)

A nylon lip brush with black handle.  
A must for lipstick demonstrations.  
Approximate length: 3 1/4 in.  
25 pieces per pack.



## SHA sharpener double pencil sharpener

Black dual sharpener.  
Approximate length: 1 1/2 x 1 1/2 in.  
Individually wrapped.



## ELC eyelash curler metal

The best in metal eyelash curlers.  
Easy grip handle.



## SSMP mix plate stainless steel

Professional stainless steel mix plate, and mixing applicator.



## YDPS dual powder sponge

Our premium dual sponge available as refills for compacts.  
Can be used for wet/dry powders.



## WE white foam wedges stainless steel

8 piece latex free wedge block.  
Use for all cream or liquid products for a sheer even application.  
White only.

# makeup cases

## AL0092 6-tray makeup case large black

6 tray hard shell makeup case to easily transport all cosmetics.  
Roomy bottom case for lotions and liquids.



## AL0042 4-tray makeup case large silver

Large silver 4-tray makeup travel case.



# more info

Check out all our catalogues online:

Check out all our catalogues online:



colour



mineral



skin care



display

Seasonal catalogues:



current & past catalogues  
available online

MORE  
ONLINE

- makeup •
- minerals •
- skin care •
- accessories •
- displays •
- how to •
- tradeshows •
- &more •

# ingredients

## BLUSH / BALLERINA PINK / SPOT LIGHTS

Talc, Zinc Stearate, Dimethicone, Methicone, Isopropyl Myristate, Imidazolidinyl urea, Phenoxyethanol, Caprylyl Glycol, Sorbic Acid. MAY CONTAIN: Mica, Titanium Dioxide, Iron Oxides, Ultramarine Blue, Manganese Violet, D&C Red 7 Calcium lake, D&C red 6 Barium lake, D&C red 27 Aluminium Lake, D&C Yellow 6 Aluminium Lake, D&C Yellow 5.

## BRONZER

Talc, Mica, Zinc Stearate, Boron Nitride, Octyldodecyl Stearoyl Stearate, Octyldodecyl Stearate, Calcium Sodium Borosilicate, Phenoxyethanol, Caprylyl Glycol, Sorbic Acid, Aluminum Starch Octenylsuccinate, Silica, Lauroyl Lysine. MAY CONTAIN: Titanium Dioxide, Iron Oxides, D & C Red #6 Lake, D & C Red #7 lake, D & C Red #27 Lake, FD & C Blue #1 Lake, FD & C Yellow #5 Lake, FD & C Yellow #6 Lake, Bismuth Oxochloride, Carmine, Chromium Oxide Green, Chromium Hydroxide Green, Ferric Ferrocyanide, Manganese Violet, Ultramarines, Tin Oxide.

## BROW FIXX / BROW WARE

Aqua, Ceresine, Stearic Acid, Olyel Alcohol, Cera Carnauba, Sorbitan Sesquiolate, Butylene Glycol, Triethanolamine, PVP Imidazolidinyl Urea, Phenoxyethanol, Caprylyl Glycol, Sorbic Acid, Hydrolyzed Soy Protein, Panthenol.

## BROW POMADE

Octyldodecyl Stearoyl Stearate, Microcrystalline Wax, Caprylyl Capric Triglycerides, Ricinus Communis(Castor) Seed Oil, Cera Alba, Boron Nitride, Euphorbia Cerifera (Candelilla) Wax, Ozokerite Wax, Silica, Copernicia Cerifera(Carnauba) Wax, Aluminum Starch Octenylsuccinate, Phenoxyethanol, Titanium Dioxide, Caprylyl Glycol Octyldodecanol, Mica, Tocopheryl Acetate, Isopropyl Myristate, Lauroyl Lysine, Simmondsia Chinensis (Jojoba) Seed Oil, Sorbic Acid, Iron Oxides, Butylparaben, Jojoba Oil, BHT, Iron Oxides.

## BROW SHADOW (see eyeshadow)

## CAMERA READY FOUNDATION BASE

Cyclopentasiloxane, Polymethylsilsesquioxane, Dimethicone / Vinyl Dimethicone Crosspolymer, C30-45 Alkyl Dimethicone.

## CHERRY BOMB

Aqua (Water), Propylene Glycol, Triethanolamine, Carbomer, Phenoxyethanol, Chamomile Recutita (Matricaria) Extract, Methylparaben, Disodium EDTA. MAY CONTAIN: Red 4, Red 33, Blue 1, Brown 1.

## COLOUR POTS

Paraffin Jelly, Titanium Dioxide, Lipstick Base (Blend of waxes/oils), D&C Yellow #5 Aluminium Lake with Castor Oil, Isopropyl Myristate, Methicone/Silicone Powder, D&C Red #7 Calcium lake With Castor Oil, Lanolin Oil, C33-5320 Russet Iron Oxide with Castor Oil, Vanillin Crystals, Butylated Hydroxy Toluene, Phenoxyethanol, Caprylyl Glycol, Sorbic Acid. MAY CONTAIN: Iron Oxides, Titanium Dioxide, Ultramarines.

## COVER UP/ TRIO/ CORRECTOR WHEEL

Ethylhexyl Palmitate, Isohexyl Caprate, Nylon-12, Paraffin, Octyldodecyl Stearate, Quartz, Ozokerite, Cera Microcrystallina, Isostearyl Behenate, Hydrogenated Castor Oil, Silica, PPG-12/SMDI Copolymer, Retinyl Palmitate, Cera Carnauba, Tocopherol, Tocopherol Acetate. MAY CONTAIN: Iron Oxides, Titanium Dioxide, Ultramarines.

## CREAM FINISH FOUNDATION (see cover up)

## CREAM GEL EYELINER

Octyldodecyl Stearoyl Sterate, Ricinus Communis (Castor) Seed Oil, Cera Alba, Caprylic Capric Triglyceride, Boron nitride, Microcrystalline Wax, Silica, Phenoxyethanol, Cyclomethicone, Isopropylparaben, Isobutylparaben, Butylparaben. MAY CONTAIN: Iron Oxides, Mica, Titanium Dioxide, Ferric Ferrocyanide, Bismuth Oxochloride, Chromium Oxide Green, D&C Red #6 Barium Lake, D&C Red #7 Calcium Lake, D&C #27 Aluminium Lake, FD&C Blue #1 Aluminum Lake, D&C Yellow

## DEFINE EYELINER

Aqua (water), Alumina, Glycerin, Anthemis Nobilis Flower Water, PEG-33, PEG-8 Dimethicone, Acrylates/Beheneth-25 Methacrylate Copolymer, Silica, Phenoxyethanol, Triethanolamine, PEG-14, Disodium Cetyl Phenyl Ether Disulfonate, Diethanolamine, Tin Oxide. MAY CONTAIN: Mica, Titanium Dioxide, Iron Oxides, D&C Black 2.

## DUAL POWDER

Talc, Mica, Aluminum Dimyristate, Mica, Dimethicone, Nylon-12, Zinc Stearate, Tocopherol, Ascorbyl Palmitate, Imidazolidinyl Urea. MAY CONTAIN: Iron Oxides, Titanium Dioxide, Chromium Oxide Greens.

## EYESHADOW

Talc, Mica, Octyldodecyl Stearoyl Stearate, Octyldodecyl Stearate, Zinc Stearate, Phenoxyethanol, Boron Nitride, Silica, Caprylyl Glycol, Sorbic Acid. MAY CONTAIN: Iron Oxides, FD & C Yellow #5 Lake, FD & C Blue #1 Lake, FD & C RED #40 Lake, Titanium Dioxide, Bismuth Oxochloride, Chromium Oxide Green, Chromium Hydroxide Green, Ferric Ferrocyanide, Manganese Violet, Ultramarines, Tin Oxide, Bronze Powder, Aluminum Powder.

# ingredients

## EYESHIMMER CREAM

Isopropyl Myristate, Petrolatum, Silica, Lanolin Oil, Mica, Isopropyl Lanolate, Candellila Wax, Ozokerite, Carnauba Wax, Bees Wax, Hydroxylated Lanolin, Acetylated Lanolin Alcohol, Benzoic Acid, BHT. MAY CONTAIN: Titanium Dioxide, Iron Oxides, Carmine, Ultramarines, Manganese Violet, Bismuth Oxychloride, Ferric Ferrocyanide, Ferric Ammonium Ferrocyanide, Chromium Oxide Greens, Chromium Hydroxide Green, Yellow 5 Lake, Blue 1 Lake.

## FACE HILITES-CREAM

Isopropyl Myristate, Petrolatum, Silica, Lanolin Oil, Mica, Isopropyl Lanolate, Candellila Wax, Ozokerite, Carnauba Wax, Bees Wax, Hydroxylated Lanolin, Acetylated Lanolin Alcohol, Benzoic Acid, Creamy Vanilla (Fragrance), BHT. MAY CONTAIN: Titanium Dioxide, Iron Oxides, Carmine, Red 7 Lake, Ultramarines, Red 6 Lake, Yellow 5 Lake, Blue 1 Lake, Red 36 Lake.

## GLITTER LIQUID LINER

Aqua (Water), Glycerin, PVP, Glyceryl Polyacrylate, Propylene Glycol, Calcium Sodium Borosilicate, Polyethylene Terephthalate, Acrylates Copolymer, Chamomile Extract, Rosemary Extract, Cucumber Extract, Triethanolamine, Diazolidinyl Urea, Iodopropynyl Butylcarbamate, 2-Bromo-2-Nitropropane-1,3 Diol. MAY CONTAIN: Mica, Titanium Dioxide, Iron Oxides, Solvent Black 28, Solvent Yellow, Solvent Red 135, Solvent Blue 36.

## HI-DEF PIGMENTS

Mica, Titanium Dioxide. MAY CONTAIN: Ferric Ferrocyanide, Carmine, Chromium Oxide Greens, Iron Oxides, Tin Oxide.

## ILLUSION TONER (see liquid face foundation)

## INVISIBLE BLOTting POWDER

Talc, Calcium Carbonate, Tricaprylin, Imdazolidnly Urea, Methylparaben, Propylparaben, Ascorbyl Palmitate.

## LIP BALM MENTHA

Polybutene, Petrolatum, Hydrogenated Polyisobutene, Disteardimonium Hectorite, Mentha Piperita (Peppermint) Oil, Menthyl Lactate, Propylene Glycol, Aroma, Sodium Saccharin.

## LIP LACQUER

Hydrogenated Polyisobutene, Caprylic Triglyceride, Polybutene, Alkane, Ethylhexyl Palmitate, Tribehenin, Ethylene/ Propylene/ Styrene/Copolymer, Glyceryl Caprylate, Butylene/ Ethylene/...

## LIP LACQUER (cont'd)

...Styrene/Copolymer, Flavor, caprylyl Glycol, 1,2-Hexanediol, Tocopheryl Acetate, Sorbitan Isostearate, BHT, Palmitoyl Oligopeptide. Mica, Titanium Dioxide, Red 7 Lake, Red 217 AL Lake, Red Lake 30, Red 40 Lake, Iron Oxides, Manganese Violet.

## LIP GLAZE

Hydrogenated Polyisobutene, Lanolin Oil, Polyethylene, Hydrogenated Castor Oil, Quaternium-18 Hectorite, Simmondsia Chinensis (Jojoba) Seed Extract, Propylene Glycol, Propylene Carbonate, Sodium Saccharin, Aroma (Flavour). MAY CONTAIN: Mica, Calcium Sodium Borosilicate, Titanium Dioxide, Iron Oxides, Carmine, Yellow 5 Lake, Yellow 6 Lake, Blue 1 Lake, Red 6, Red 7, Red 7 Lake, Red 22 lake, Red.

## LIPGLOSS

Polybutene, Pentaerythrityl Tetraisoostearate, Tridecyl Trimellitate, C18-36 Acid Triglyceride, Ricinus Communis (Castor) Seed Oil, Propylene Glycol, Vanillin, Sodium Saccharin, Ascorbyl Palmitate, Tocopherol. MAY CONTAIN: Mica, Silica, Bismuth Oxychloride, Calcium Aluminum Borosilicate, Titanium Dioxide, Iron Oxides, Carmine, Blue 1 Lake, Yellow 5 Lake, Yellow 6 Lake, Blue 1 Lake, Red 6, Red 6 Lake, Red 7, Red 7 Lake, Red 22 Lake, Red 27 Lake, Red 28 Lake, Red 30 Lake, Red 33 Lake.

## LIPSTICK

Ricinus Communis (Castor) Seed Oil, Oleyl Oleate, Cera Alba, Candellila Cera, Ozokerite, Paraffinum Liquidum, Cera Carnauba, Methyl Glucose Sequistearate, Lanolin, Vanillin, Tocopherol, Isodecyl Neopentanoate, Prunus Armeniaca (Apricot) Kernel Oil, Ascorbyl Palmitate. MAY CONTAIN: Mica, Silica, Dilsostearyl Dimer Dillnoleate, Aloe Barbadosensis Leaf Extract, Bismuth Oxychloride, Titanium Dioxide, Carmine, Manganese Violet, Iron Oxides, Red 6, Red 21, Red 6 Lake, Red 7 Lake, Red 21 Lake, Red 27 Lake, Red 28 Lake, Red 33 Lake, Yellow 5 Lake, Yellow 6 Lake, Blue 1 Lake.

## LIQUID EYE LINER

Aqua (Water), Glycerin, Anthemis Nobilis Flower Water, PEG-33, PEG-8 Dimethicone, Acrylates/Beheneth-25 Methacrylate Copolymer, Silica, Phenoxethanol, Triethanolamine, PEG-14, Disodium Cetyl Phenyl Ether Disulfonate, Diethanolamine. MAY CONTAIN: Mica, Iron Oxides, D&C Black 2.

## LIQUID FACE FOUNDATION

Aqua (Water), Propylene Glycol, Talc, Paraffinum Liquidum, Isopropyl Myristate, Ethylhexyl Palmitate, Cetyl Esters, Hydrogenated Cottonseed Glyceride, Rosa Centifolia Flower Water, Stearic Acid, Magnesium Aluminum Silicate, Phenoxyethanol, Triethanolamine, Caprylyl Glycol, Chlorphenesin, Dimethicone, Cellulose Gum, Disodium Oleamide PEG-2 Sulfosuccinate, Sodium Dehydroacetate, Polyamino Sugar Condensate, Urea, Isoctearic Acid, Benzophenone-4, Wheat Germ Glycerides, Tocopheryl Acetate, Sulfated Castor Oil, Stearoyltrimethylsilane, Stearyl Alcohol, Lithium Stearate. MAY CONTAIN: Iron Oxides, Titanium Dioxide, Ultramarines.

## LOOSE POWDER

Talc, Zinc stearate, Magnesium Carbonate, Imidazolidinyl Urea, Methylparaben, Propylparaben. MAY CONTAIN: Iron Oxides, Manganese Violet, Mica, Titanium Dioxide, D&C Red 8 Barium Lake, D&C Red 7 Calcium lake, Ultramarine Blue, de Ultramarine Pink, Bismuth oxychloride.

## LUXEWARE / LUXE EXTREME (see gloss)

## MASCARA - INTENSE LASH

Aqua (Water), Copernicia Cerifera (Carnauba) Wax, Acrylates Copolymer, Glyceryl Stearate, Stearic Acid, Polybutene, Oleic Acid, Triethanolamine, Hydroxyethylcellulose, Phenoxyethanol, Tocopheryl Acetate, Retinyl Palmitate, Panthenol, Trehalose, Ascorbyl Palmitate, Sodium Hyaluronate, Dimethicone, Caprylyl Glycol, Ethylhexylglycerine, Potassium Sorbate, Iron Oxide, Kaolin.

## MASCARA - LASHWARE

Aqua (Water), Copernicia Cerifera (Carnauba) Wax, Acrylates Copolymer, Glyceryl Stearate, Stearic Acid, Polybutene, Oleic Acid, Triethanolamine, Hydroxyethylcellulose, Phenoxyethanol, Tocopheryl Acetate, Retinyl Palmitate, Panthenol, Trehalose, Ascorbyl Palmitate, Sodium Hyaluronate, Dimethicone, Caprylyl Glycol, Ethylhexylglycerine, Potassium Sorbate, Iron Oxide, Kaolin.

## PENCIL LIP & EYE

Hydrogenated Vegetable Glycerides, Talc, Behenyl Alcohol, Isopropyl Myristate, Stearalkonium Hectorite, Propylene Carbonate, Methylparaben, Propylparaben BHA. MAY CONTAIN: Mica, Ultramarine Blue, Titanium Dioxide, Iron Oxides, Manganese Violet, Ferric Ferrocyanide, Carmine, Aluminium Powder, Silica.

## PENCIL MECHANICAL LIP & EYE

Cyclopentasiloxane, Synthetic Beeswax, Arachidyl Behenate, Distearldimonium Hectorite, Oryza Sativa (Rice) Bran Wax, Microcrystalline Wax, Mineral Oil, Methylparaben, Propylparaben, BHT. MAY CONTAIN: Iron Oxides 77491/77492/77499, Mica 77019, Ultramarines 770077, Titanium Dioxide 77891, Ferric Ferrocyanide 77510, Aluminium Powder 77000, Bismuth Oxochloride 77163, Black 2, Blue 1 Lake, Carmine 75470, Chromium Hydroxide Green 77289, Chromium Oxide Greens 77288, Manganese Violet 77742, Yellow 5 Lake, Zinc Oxide 77947.

## PRIME TIME

C15-19 Alkane, Titanium Dioxide, Polybutene, Bismuth Oxochloride, Beeswax, Silica, Calcium Aluminum Borosilicate, Ozokerite, Polyethylene, Bisabolol, Iron Oxides, Methylparaben, Tocopheryl Acetate, Butylparaben, Ethylparaben, Isobutylparaben, Propylparaben.

## SHEER GLO

Aqua (Water), Cyclopentasiloxane, Cyclohexasiloxane, Propylene Glycol, Dimethicone, Stearic Acid, Triethanolamine, Magnesium Aluminum Silicate, Isostearic Acid, Glyceryl Stearate, Oleth-20, Steareth-2, Diazolidinyl Urea, Methylparaben, Cellulose Gum, Propylparaben, Xanthan Gum, Tocopheryl Acetate, Trisodium, EDTA, Parfum MAY CONTAIN: Mica, Iron Oxides, Titanium Dioxide.

## STAR CRYSTALS

Polyethylene Terephthalate, Isobutylphenoxy Epoxy Resin, Aluminum

## TRANS-FIX

Aqua (Water) Propylene Glycol, Imidazolidinyl Urea, Polyvinylpyrrolidone, Quaternium-15, Citric Acid.

## minerals

### MINERAL BRONZER

Mica, Titanium Dioxide, Iron Oxides, Simmondsia Chinensis (Jojoba) Oil, Zinc Stearate, Bismuth Oxochloride, Magnesium Carbonate, Phenoxyethanol (and) Caprylyl Glycol (and) Sorbic Acid.

### MINERAL CRUSHED SHADOW

Mica & Titanium Dioxide.  
MAY CONTAIN: Ferric Ferrocyanide, Carmine, Chromium Oxide Greens, Iron Oxides, Tin Oxide

# ingredients

## minerals

### MINERAL FOUNDATION

Mica, Micronized Titanium Dioxide, Zinc Stearate, Zinc Oxide, Magnesium Carbonate, Simmondsia Chinensis (Jojoba) Oil, Bismuth Oxchloride, Phenoxyethanol (and) Caprylyl Glycol (and) Sorbic Acid.

### MINERAL ICING SUGAR

Mica, Titanium Dioxide, Iron Oxides, Jojoba Oil, Magnesium Carbonate, Phenoxyethanol, Carmine, Caprylyl Glycol, Boron Nitride, Tin Oxide, Sorbic Acid.

### MINERAL PRESSED BLUSH

Mica, Jojoba Oil, Zinc Stearate, Magnesium Carbonate, Boron Nitride, Phenoxyethanol, Silica, Caprylyl Glycol, Sorbic Acid.  
MAY CONTAIN: Aluminum Oxide, Bismuth Oxchloride, Bronze Powder, Carmine, Chromium Hydroxide Green, Chromium Oxide Green, Ferric Ferrocyanide, Iron Oxides, Manganese Violet, Tin Oxide, Titanium Dioxide, Ultramarines.

### MINERAL PRESSED BRONZER

Mica, Dimethicone, Zinc Stearate, Nylon-12, Caprylyl Glycol, Phenoxyethanol, Hexylene Glycol, Tocopherol, Ascorbyl Palmitate  
MAY CONTAIN: Iron Oxides, Titanium Dioxide, Ultramarines.

### MINERAL PRESSED EYESHADOW

Mica, Jojoba Oil, Zinc Stearate, Boron Nitride, Magnesium Carbonate, Phenoxyethanol, Caprylyl Glycol, Sorbic Acid.  
MAY CONTAIN: Aluminum Oxide, Bismuth Oxchloride, Carmine, Chromium Hydroxide Green, Chromium Oxide Green, Ferric Ferrocyanide, Iron Oxides, Manganese Violet, Tin Oxide, Titanium Dioxide, Ultramarines.

### MINERAL PRESSED FOUNDATION

Mica, Dimethicone, Zinc Stearate, Nylon-12, Caprylyl Glycol, Phenoxyethanol, Hexylene Glycol, Tocopherol, Ascorbyl Palmitate.  
MAY CONTAIN: Iron Oxides, Titanium Dioxide, Ultramarines.

## TERMS AND CONDITIONS

All first time orders are credit card, cash or certified cheque.

### NSF CHEQUES

A \$25.00 service charge is applied to any NSF cheque. All orders following will be credit card or certified cheque only.

### SHIPPING CHARGES

A \$10.00 charge is for the first \$100.00  
\$2.00 is added for each additional \$100.00

### BACKORDERS

We do not keep backorders. Should a zero be indicated on your order, kindly re-order on your next order.

### RETURNS

No returns are accepted without authorization.

The only returns accepted are, if the product is faulty, due to a manufacturing defect.

A claim must be made within 3 days of receiving the order.

If a colour choice is not suitable, it is not an acceptable reason for a return.

pinnacle  
cosmetics

professional private label



website



google map

Visit us Online to browse  
Colour stories, Catalogues  
and much more.

[www.pinnaclecosmetics.com](http://www.pinnaclecosmetics.com)

V.0.2

9C taymall avenue toronto, on M8Z 3Y8 canada  
[www.pinnaclecosmetics.com](http://www.pinnaclecosmetics.com)    [sales@pinnaclecosmetics.com](mailto:sales@pinnaclecosmetics.com)  
1-800-368-0371 fax: 416-233-0757