

pinnacle
cosmetics
professional private label



CLASSIC LABEL PACKAGING

EUROPE CATALOGUE

ABOUT US

PRODUCTS

Pinnacle Private Label cosmetics specializes in high quality products with an extensive colour selection. We pride ourselves in using only the very highest standards of pigments and ingredients.

NO MINIMUMS

You get exactly what you want, when you want it. Orders shipped and delivered within 7-10 business days. All our products come individually black boxed.

OPTION 1

Order our product as is.

OPTION 2

We brand each product with your logo, professionally printed.

WE'RE ONLINE

All our products can be viewed on our site. Visit www.pinnaclecosmetics.com

CALL US

WORLDWIDE — 1.800.368.0371
Speak direct with a Brand Manager — we will answer any questions and get you started in developing your cosmetic line.

VISIT OUR SHOWROOM

We have a private showroom that you can visit and where you can pick out your cosmetics. You will have a brand manager assist you during the entire process of selecting the products best suited for you and your business. Call for an appointment.

SKYPE APPOINTMENTS

Can't make it to our showroom? No problem. We do appointments via Skype — call to book the Skype studio.

TRADE SHOWS

Please check our website to see when we are visiting your city.



DARE TO BE DIFFERENT, create a line with your name on it. I did.

Vita PRESIDENT
PRODUCT DEVELOPER



PRIVATE LABELLING



CREATE YOUR OWN BRAND

We offer you your own private label line. An extensive luxury cosmetic line with a full range of high quality skincare products professionally printed with your logo.

QUANTITIES

Absolutely NO MINIMUMS!

START UP COSTS

A one time plate charge of only \$160.00 for makeup.
A one time plate charge of only \$160.00 for skincare.
A one time plate charge of only \$160.00 for pencils.

PRINT CHARGE

\$25.00 set up fee per order.
Plus \$0.25 per container print.

ARTWORK

We require the logo in a high-resolution format (at least 300dpi). Black text on a white background is preferred.

PAYMENT

The one time plate payment(s) is required in full to proceed with layouts. Orders require 100% pre-authorized payment.

SET UP AN ACCOUNT

We just need your business address and credit card number.

COLOURS

Logo colour can be discussed upon approval.
We suggest black, silver or gold.

DELIVERY

Please allow approximately 2-3 weeks for the first order. This allows time to produce artwork, obtain final approval, produce stock and deliver.

Repeat orders allow 7-10 business days.

*all pricing subject to change without notice



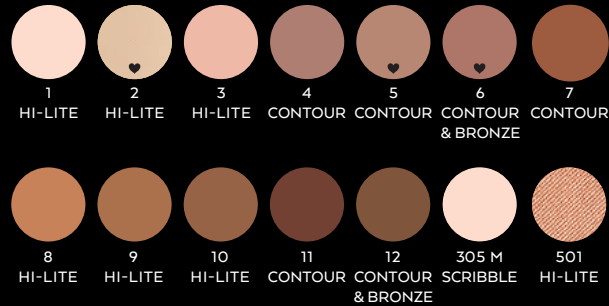


CONTOUR POWDER

POWDER FINISH

FEATURES

- blendable formulas to sculpt and define features
- darker shades for shading and defining
- lighter shades for sculpting and enhancing features
- removable and refillable





5 WELL COLOUR CORRECTOR

PALLET

FEATURES

- colour correctors in a cream base
- medium coverage
- balances out — colour corrects all skin tones and skin types

OPTICAL ILLUSION



SHADY



TIP

Medium to deep skin tones: we suggest *Tinted*.



CAMERA READY

FOUNDATION PRIMER

FEATURES

- a makeup base that gives a matte finish
- silicone based primer
- apply before foundation on clean skin
- minimizes fine lines
- perfect for all skin types
- helps makeup last all day — flawless
- Tinted can be used on all skin types; does not deposit colour



TIP

Apply sparingly in a light tapping motion or with a concealer brush.



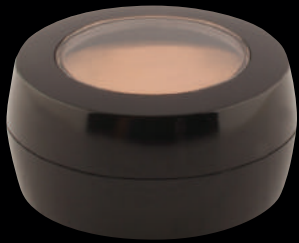
PRIME TIME

EYE & LIP PRIMER

FEATURES

- primer for eye and lip area
- prevents lipstick from feathering
- prevents eyeshadow from wearing off or blending unevenly
- perfect for sensitive skin
- perfect for anyone who has trouble with eye makeup smudging or hot flashes
- helps keep shadow on all day



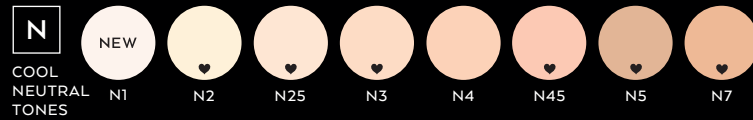


CONCEALER POTS

CREAM FORMULA

FEATURES

- cream concealer
- full coverage
- matte finish
- set with powder to increase staying power
- refills available in blush size pans



TIP

Apply with concealer brush or the heat from your fingertips to give a perfect finish.



LIQUID CONCEALER

UNDER COVER

FEATURES

- liquid concealer
- medium coverage
- quick dry
- water resistant longwear formula
- anti-aging formula with collagen helps reduce puffiness
- non transferable to clothes
- stay put formula



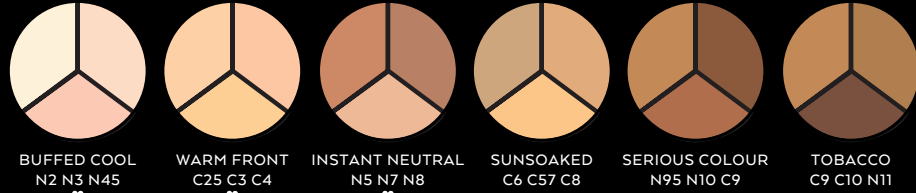


CONCEALER TRIO

COMBINATION

FEATURES

- cream concealer in a trio
- full coverage
- matte finish
- set with powder to increase staying power



TOUCH UP VEIL

MATTE PERFECTION

FEATURES

- lightweight liquid concealer
- medium-full coverage
- water resistant
- matte finish
- neutralizes skin tone
- perfect for all skin types

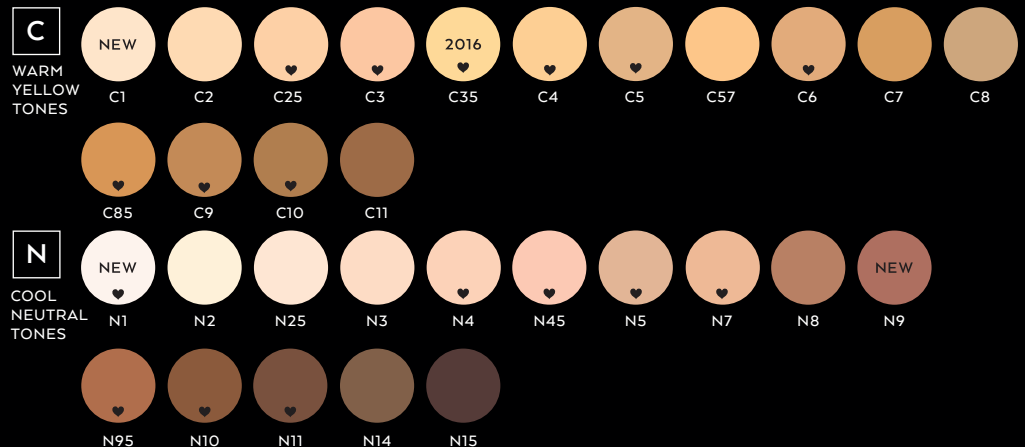


CREAM FOUNDATION

COMPACT

FEATURES

- cream-based foundation in a compact
- full coverage
- matte finish
- for those with dry skin, we recommend to use cream foundation with camera ready to increase slip



TIP

Apply with foundation or stipple brush and set with dual powder for full coverage.

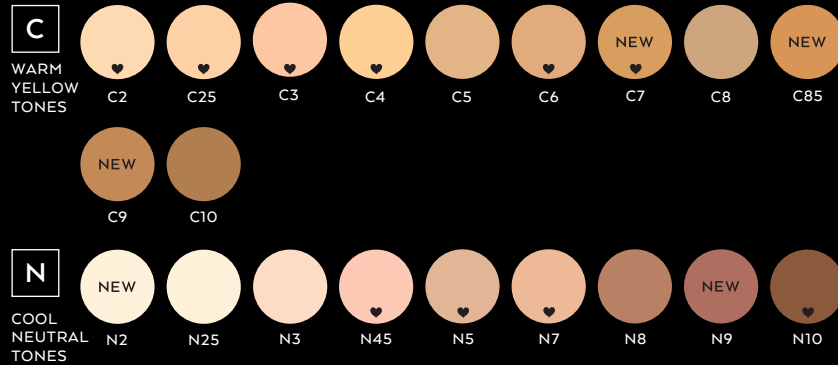


FACE MAKEUP

FLAWLESS FINISH

FEATURES

- water based liquid foundation
- light to medium coverage
- contains antioxidant vitamin E
- contains wheat germ to improve skin's elasticity
- perfect for sensitive skin
- non-comedogenic



TIP

Our products do not contain any SPF. We recommend an even application of sunscreen first for best sun damage prevention.

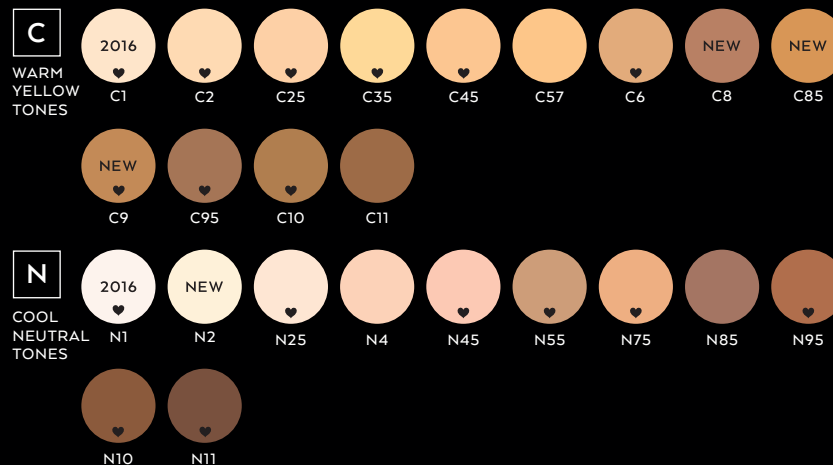


HI-DEF FOUNDATION

LIQUID

FEATURES

- medium to full coverage
- best-selling formula
- dewy finish — not matte
- non-transferable — won't rub off on clothes
- anti-aging formula contains collagen which helps with puffiness
- water resistant



TIP

For added coverage set with co-ordinating dual powder shade or loose powder shade.



DUAL POWDER FOUNDATION

FULL COVERAGE FOUNDATION

FEATURES

- foundation and powder all in one
- medium to full coverage
- use as a foundation with brush or sponge
- use for touch ups
- will not settle into fine lines
- use on top of any liquid or cream foundation to set or add coverage
- use dampened sponge for full coverage foundation (for oily skin)



C

WARM
YELLOW
TONES

NEW

C1

NEW

C7

N

COOL
NEUTRAL
TONES

2016

N1

NEW

N2

NEW

N9

LOOSE POWDER

TRANSLUCENT

FEATURES

- lightweight powder that removes shine or oil without buildup
- matches skin tone without buildup
- mattifies skin
- contains oil absorbing powders
- will not settle into fine lines



C

WARM
YELLOW
TONES

C1

NEW

C25

NEW

C7

N

COOL
NEUTRAL
TONES

NEW

N1

NEW

N9



BB CREAM

TINTED MOISTURIZER

AVAILABLE
SOON

FEATURES

- part skin care, part makeup
- 100% amazing
- hydrating, protecting with sheer, radiant coverage
- provides superior skin protection that may prevent premature skin aging and darkening
- produces a very natural, no makeup look

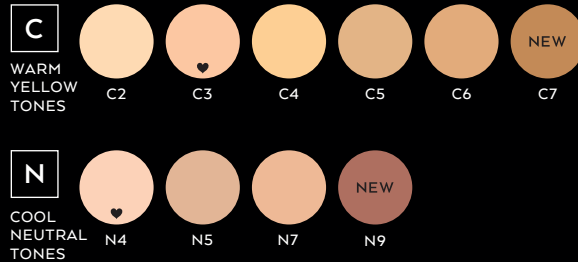


MOUSSE FOUNDATION

PERFECT BALANCE

FEATURES

- cream to powder
- light velvety texture
- light-medium coverage
- matte finish
- visibly reduces appearance of fine lines
- powder is optional
- non-comedogenic



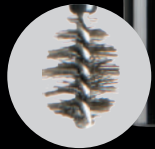


BROW FIXX

TINT & SHAPER

FEATURES

- a tinted gel formula
- tames and fills in brows
- water resistant
- tiny fibres help bulk up brows
- helps brows appear more dense
- wear alone or with brow shadow
- new ball brush applicator allows for more precision



LIQUID SHIMMER

SHIMMER LOTION

FEATURES

- shimmer under the brow bone
- lasts 18 hours
- waterproof
- smudge proof — dries instantly
- light reflecting pigments
- can be used on face or body as liquid shimmer



BROW MASCARA

TINT & SHAPER

FEATURES

- a tinted gel formula
- tames and fills in brows
- water resistant
- tiny fibres help bulk up brows
- helps brows appear more dense
- clear can be used as mascara
- can be used as root touchup





BROW SHADOW

H I - B R O W P O W D E R

FEATURES

- formulated to give brows a natural definition
- matte powder formula to fill in uneven brow line



NEW



BROW WAX

P O M A D E

FEATURES

- clear brow wax to tame brows
- enhances a clean modern line
- apply after brow shadow
- keeps stray hairs in place
- easy to apply with angle brow brush #15
- apply sparingly



TRANS-
PARENT
BROW WAX



SPOT LIGHT - STROBING

S H I M M E R P O W D E R

FEATURES

- triple milled formula
- more pearlized than blush
- sheer and translucent sheen
- not sparkly but glowing
- can be used as illuminator or strobing powder on face or body
- can be used on eyes
- use as a highlighter

SHADE GUIDE

Fair skin - use champagne tones
 Light to medium skin - use pink champagne tones

Olive skin - use gold tones
 Dark skin - use terra cotta tones





BLUSHER

TRIPLE-MILLED

FEATURES

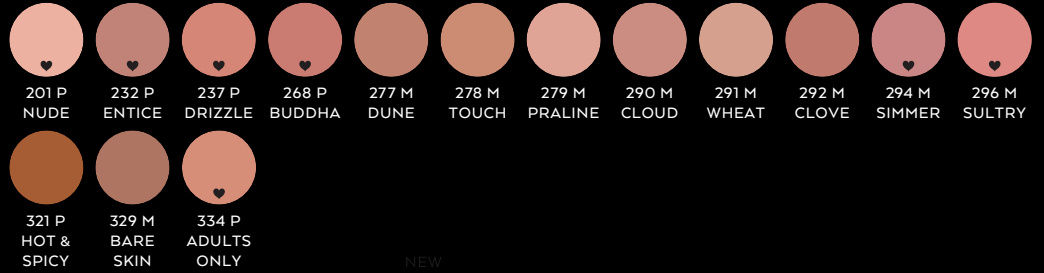
- triple milled fine powders
- highly pigmented
- use after face powder
- 80 shades available
- lightweight texture glides smoothly and evenly
- Available for: contour powder

TEXTURES

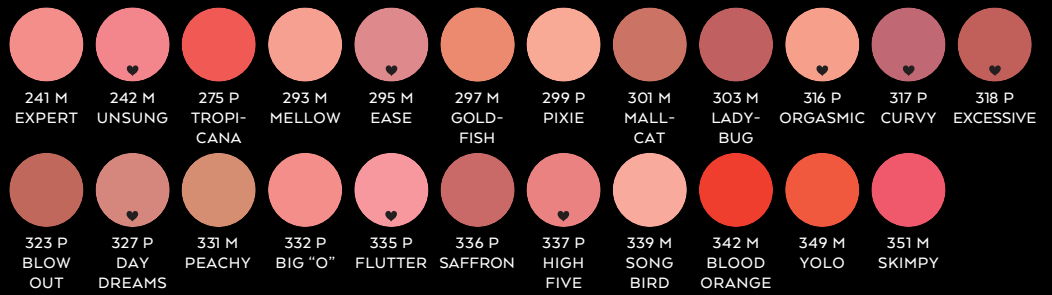
P - Pearlized or Frosted

M - Matte

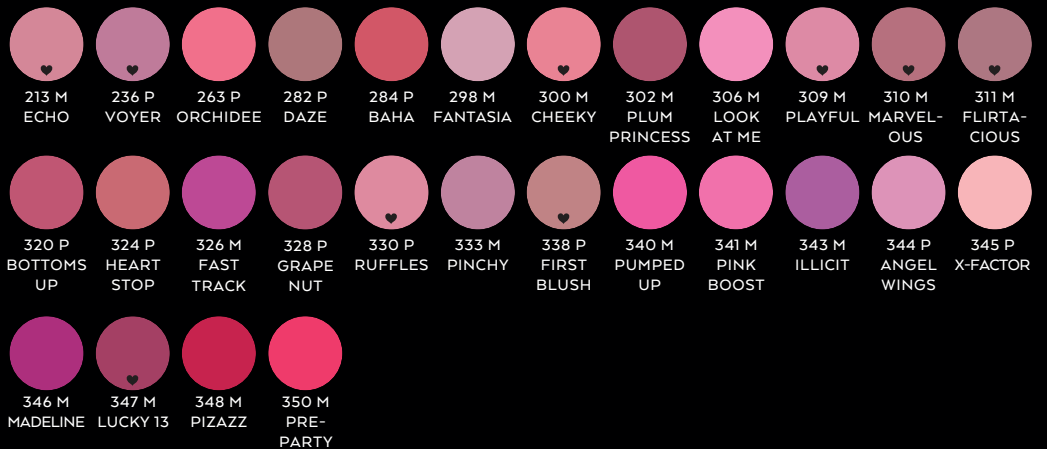
NEUTRALS & BRONZES



WARM PINKS, PEACHES & CORALS



COOL PINKS, MAUVES & REDS



UNIVERSAL



700 M
UNIVERSAL
FOR ALL
SKIN TONES



BRONZE BABY

ILLUMINATING LOTION

FEATURES

- silky smooth lotion with a pearl finish
- instant bronze glow
- use on face or body
- dries instantly
- can be worn on bare face
- works on all skin types
- not to be confused with a self tanner, wash off daily



SUNNY ISLES

INGREDIENTS: Aqua, Cyclopentasiloxane, Cyclohexasiloxane, Propylene Glycol, Dimethicone, Stearic Acid, Triethanolamine, Glyceryl Stearate, Magnesium Aluminum Silicate, Isostearic Acid, Oleth-20, Steareth-2, Glycerin, Diazolidinyl Urea, Cellulose Gum, Xanthan Gum, Tocopheryl Acetate, Trisodium EDTA. May contain (+/-): CI 77491, CI 77492, CI 77499, CI 77891, CI 75470, CI 17200.



BRONZER COMPACT

PRESSED BRONZER

FEATURES

- triple milled powders that give a sheer fine sun-filled glow
- apply with a buffer or powder brush to the high points of the face where the sun naturally hits

SHADE GUIDE

100 P - a light pearl tan for fair olive tones

200 - works with most olive yellow based tones

300 - a medium matte tone

400 - a rich terracotta tone with flecks of gold

407 P - works with most cool neutral tones, has a slight touch of pink

500 - a deep rich earthy tone for darker skins



100 P
BRAZILIAN
LIGHT



200 P
EXOTIC
BLEND



300 M
GOLDEN
GODDESS



400 P
TERRA
COTTA



407 P
SUN-
KISSED



500 P
INSTANT
SEXY



901 P
BALLERINA
DUO

INGREDIENTS: Talc, Mica, Zinc Stearate, Octyldodecyl Stearoyl Stearate, Calcium Aluminum Borosilicate, Boron Nitride, Ethylhexyl Palmitate, Phenoxyethanol, Silica, Tin Oxide. May contain (+/-): CI 15850, CI 15880, CI 15985, CI 77491, CI 77492, CI 77499, CI 77742, CI 77891.



SHEER GLO

ILLUMINATING LOTION

FEATURES

- use on face or décolleté
- gives instant glow to all skin tones
- wear alone or on top of foundation
- fast dry — long wear
- gorgeous effect if mixed with liquid foundation
- especially amazing for mature/dry skin — replaces youthful glow



1
MOVIE
STAR



2
PARADISE



3
GLO
PINK



4
FAKE IT



5
APHRODITE

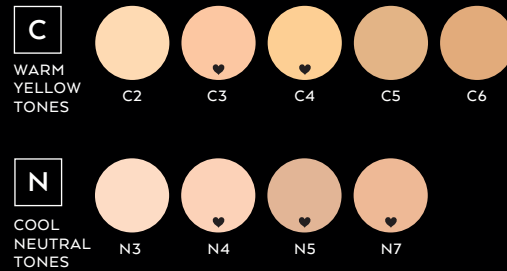


MINERAL FOUNDATION

PRESSED POWDER COMPACT

FEATURES

- more matte finish than mineral loose foundation
- full coverage when applied with sponge
- silky smooth feel and application
- lighter coverage when applied with kabuki or we prefer the flat buffer brush
- convenient for touch ups

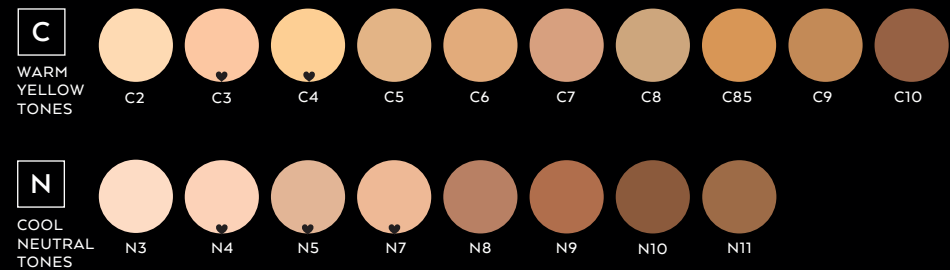


MINERAL FOUNDATION

LOOSE POWDER JAR

FEATURES

- natural look and feel
- stays on all day with one application
- ideal for sensitive skin
- has slight natural sheen to give dewy healthy look to skin
- you control amount of coverage depending on how much is applied
- apply to face with kabuki brush or flat top brush, tap off excess powder

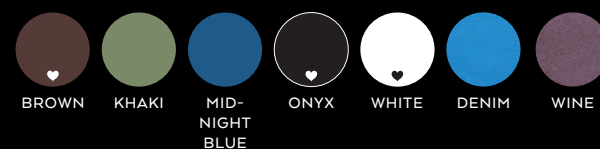


PENCIL EYE

KHOL LINER

FEATURES

- premium quality pencils manufactured in Germany
- soft creamy khol formula
- hypo-allergenic formula ideal for sensitive eyes



EYESHADOW

TRIPLE MILLED EYESHADOW

FEATURES

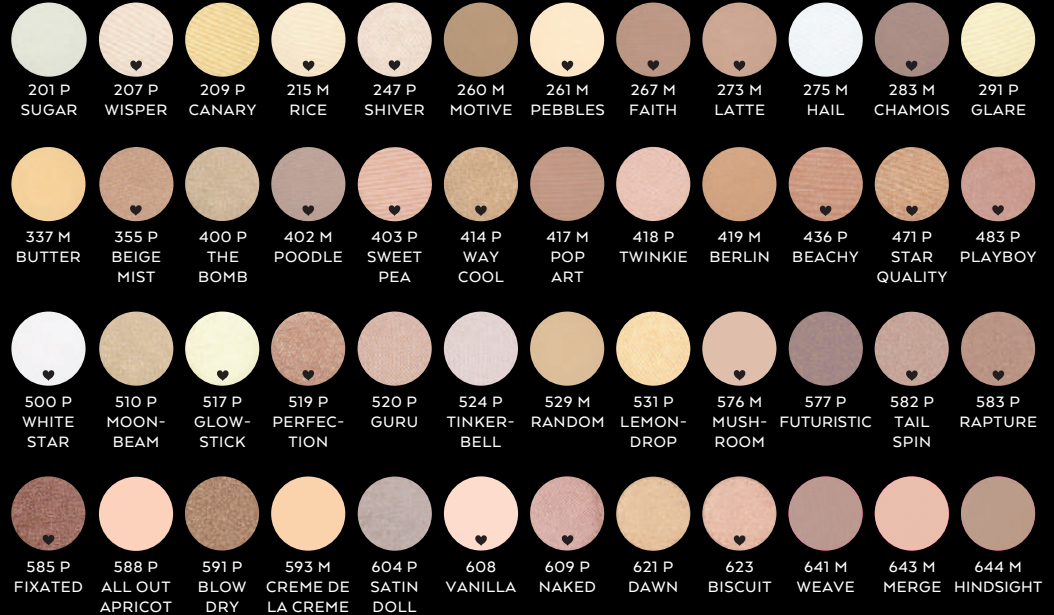
- triple milled
- highly pigmented
- all available as refills
- over 200 shades to choose from
- can be used wet as an eyeliner — we suggest liquid transformer



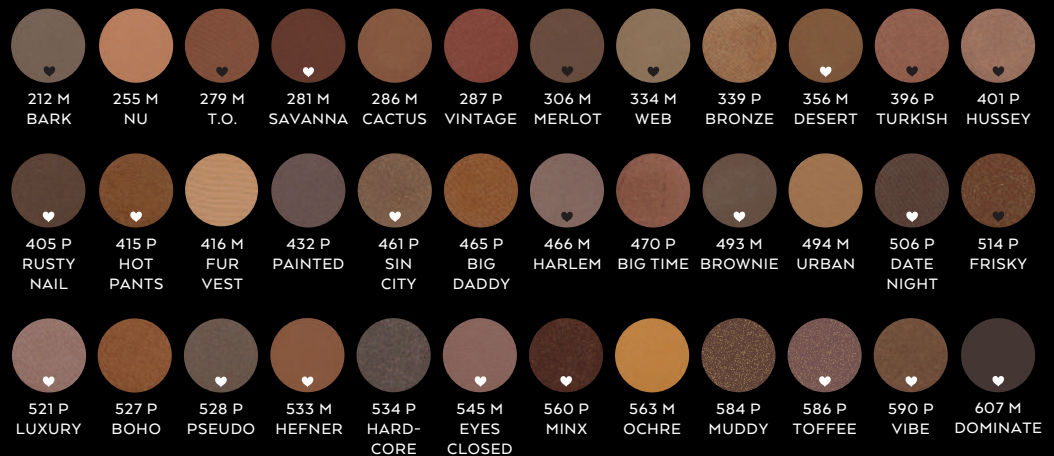
TEXTURES:

P - Pearlized or frosted M - Matte, no pearl

NEUTRALS & HIGHLIGHTS



BRONZES & BROWNS



COPPERS,
PEACHES
& GOLDS



WARM &
COOL PINKS



WINES &
PURPLES



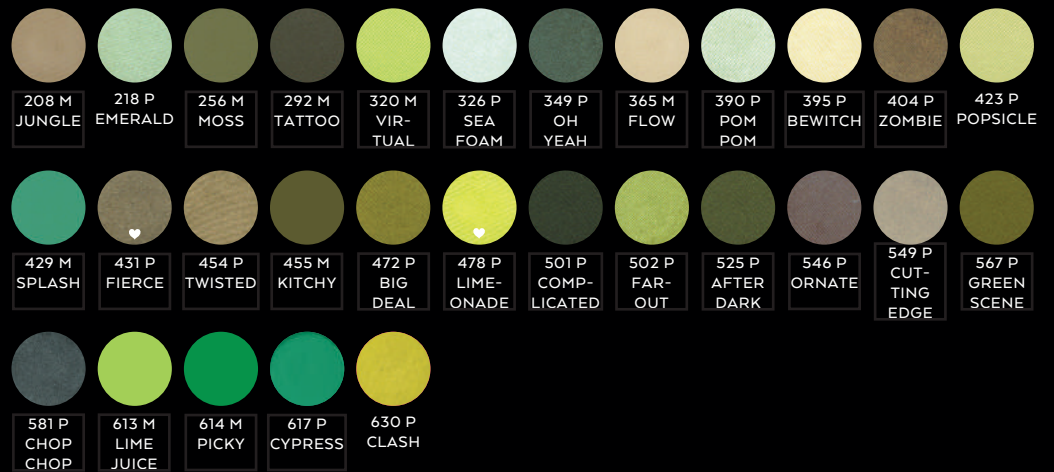
GREYS,
CHARCOALS
& BLACKS



TURQUOISE
& BLUES



GREENS



MASCARA WATERPROOF

M A S C A R A

FEATURES

- creamy waterproof mascara provides extreme long lashes up to 60%
- formulated with Vitamin A, E and C
- enriched with Panthenol, Aloe Vera, Chamomile, Ginkgo & Ginseng extracts to moisturize, strengthen and nourish lashes



JET
BLACK



MASCARA INTENSE

VOLUME & CURLING MASCARA

FEATURES

- curling and volumizing formula
- contains natural polymers to stretch and hold
- water resistant (not waterproof)
- lashes keep shape for 12 hours
- increase curl by 50%
- contains Vitamin A, C and E
- perfect for sensitive eyes/contact lens wearers



BLACK

DARK BROWN

HELLO SAILOR

COBALT BLUE



LIQUID LINER

PEN TIP APPLICATOR

FEATURES

- long wear formula
- quick drying
- ink like formula
- easy to use marker tip applicator, perfect for unsteady hands



ONYX

STORM

TABAC



LIQUID LINER DEFINE

PRECISION BRUSH APPLICATOR

FEATURES

- long wear formula
- quick drying
- fine tip applicator for detail application



1
TATTOO
BLACK

4
NU-
DENIM

5
PEACOCK



LIPSTICK XTREME MATTE

LUXURY

FEATURES

- extreme pigment
- full coverage
- long lasting - creamy texture
- packed with the antioxidant Vitamin E
- some shades available in refills
- contains natural vanillin extract

TEXTURES

M - Matte, full coverage, longwear, no shine

NUDES, NEUTRALS & BROWNS



PEACHES, CORALS, ORANGES & REDS



PINKS, FUSCHIAS & PURPLES



PEARL MATTE



PRIMARY



LIPSTICK

LUXURY

FEATURES

- packed with the antioxidant Vitamin E
- all available as refills
- over 250 shades to choose from
- contains natural vanillin extract

TEXTURES

C - Cream (smooth and creamy)

P - Pearlized or Frosted

HG - Hi-Gloss (super shiny and glossy, ultra lightweight)

V - Super soft matte texture

S - Extreme shine

NUDES, NEUTRALS & BROWNS



BERRIES & PLUMS



MERLOTS & REDS



PINKS & FUSCHIAS



DEEP PINKS & NUDE MAUVES



PEACHES, CORALS & COPPERS



LIPGLOSS

LUXURY

FEATURES

- slightly tacky texture (designed for longwear)
- contains natural vanillin extract
- super pigmented
- stays on longer than any other lipgloss
- contains antioxidant Vitamin E
- and retains its colour

TEXTURES

C - Creamy P - Pearlized S - Sheer

NUDES, NEUTRALS & BROWNS



PINKS, FUSCHIAS & PURPLES



PEACHES, CORALS, COPPERS & REDS



GLITTER



TIP

Wear with co-ordinating lip liner to increase intensity and wearability.





MATTE LIQUID LIPSTICK

LIQUID LIPSTICK

FEATURES

- high impact matte finish
- a creamy full coverage longwear liquid lipstick
- try one shade on top and another on bottom lip
- lightweight texture
- will not feather
- easy to use click pen applicator



VINYL LIP LACQUER

LONGWEAR LIP-HYBRID FORMULA

FEATURES

- high impact pigments
- more coverage and shine than lipgloss
- similar to liquid lipstick with insane high-watt shine
- fade proof
- infused with maximum staining pigments
- non-drying stay put finish
- use with lipliner to prevent feathering





PENCIL LIP

KHOL LINER

FEATURES

- manufactured in Germany
- soft creamy khol formula
- hypo-allergenic formula perfect for sensitive lips



REFILLABLE EMPTY PALLETS

REFILLS SOLD SEPARATELY

FACE



LARGE PAN 6 WELL PALLET
DUAL POWDER OR CREAM FINISH
OR PRESSED POWDER
HYEP6L



3 WELL PALLET
3 CONTOUR
HYP3M



MEDIUM PAN 6 WELL PALLET
POWDER & CREAM CONTOUR
HYEP6M

REFILLABLE EMPTY PALLETS

REFILLS SOLD SEPARATELY

EYES



2 WELL PALLET (DUO) & MIRROR
HYEP2



3 WELL PALLET & MIRROR
YEP3



5 WELL PALLET & MIRROR
YEP5



8 WELL PALLET
& MIRROR
HYEP8



12 WELL PALLET
& MIRROR
HYEP12



11 WELL PALLET & MIRROR
9 EYESHADOW/2 BLUSH
HYEP2/9

CHEEKS



3 WELL PALLET
& MIRROR
HYEP3M



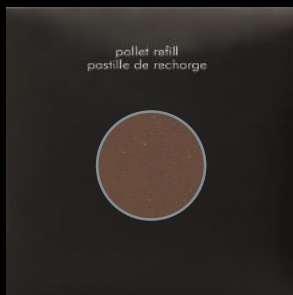
6 WELL PALLET
& MIRROR
HYEP6



11 WELL PALLET & MIRROR
9 EYESHADOW/2 BLUSH
HYEP2/9

REFILLS

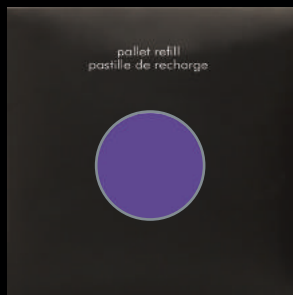
BROW SHADOW REFILLS



AVAILABLE FOR:

- 2 well pallet
- 3 well pallet
- 5 well pallet

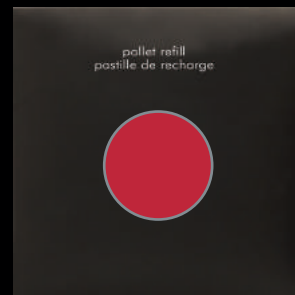
EYESHADOW REFILLS



AVAILABLE FOR:

- 2 well pallet
- 3 well pallet
- 5 well pallet
- 11 well pallet
- 12 well pallet

LIPSTICK REFILLS



AVAILABLE FOR:

- 3 well pallet
- 5 well pallet
- 12 well pallet

BLUSH, CONTOUR REFILLS



AVAILABLE FOR:

- 3 well pallet
- 6 well blush pallet
- 11 well pallet
- cream refill and powder contour

DUAL POWDER REFILLS



AVAILABLE FOR:

- large pan 6 well

CREAM FOUNDATION REFILLS



AVAILABLE FOR:

- large pan 6 well

PINNACLE COSMETICS

ACCESSORIES

TOOLS OF THE TRADE.

Key pieces needed for the artist to complete the task of a perfect makeup service.

Accessories including brushes, sponges and makeup charts.

Packaged for retail or to use in a professional makeup kit.

GET YOUR GAME ON.



Best-Sellers

NEW

New Product

TIP

Application Tips

GRAPHITE

NON-SHEDDING ARTIST BRUSHES — PROFESSIONALLY BOXED



MINERALS

VEGAN BRUSHES

FEATURES

- non-shedding
- all brushes boxed
- contain no animal hairs



#40
MINERAL
POWDER
VEGAN



#41
MINERAL
BUFFER
VEGAN



#43
MINERAL
CONCEALER
VEGAN



#44 baby buki

#44
MINERAL
BABY BUKI
VEGAN



#45
MINERAL
HD KABUKI
VEGAN

RETRACTABLE

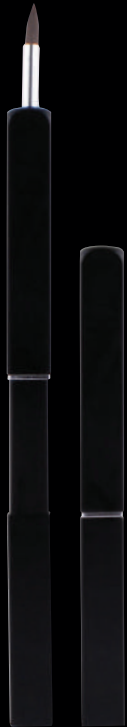
BRUSHES

DUO

BRUSHES



38 BR
ANGLED
BROW
BRUSH
VEGAN



#903
LIP
BRUSH
VEGAN



BRPOS
BLUSH
BRUSH
VEGAN



#37
DUO
EYEBROW
VEGAN



#36
DUO
SMOKEY
VEGAN

7PC BRUSH SET

MAKEUP CASE

INCLUDES

- blush brush GOAT
- primer NYLON
- shadow brush PONY
- detail brush PONY
- liner brush VEGAN
- lip brush VEGAN
- lash brow brush VEGAN



*Also available empty.

CODE: 7PC

14PC BRUSH SET

MAKEUP CASE

INCLUDES

- powder GOAT
- blush GOAT
- large shadow shader GOAT
- oval shadow blender PONY
- concealer TAKLON
- flat liner NYLON
- precision crease shadow PONY
- mini smudger
- shadow PONY
- angle liner TAKLON
- spot concealer TAKLON
- flat lip VEGAN
- fine pointed eye liner SABLE
- spoolie VEGAN
- lash 'n' brow groomer VEGAN



*Also available empty.

CODE: 14PC

APRONS

MAKEUP CASE

INCLUDES

- style meets function
- 3 sizes to choose from
- adjustable belts with clips
- brushes not included



MEDIUM APRON — CODE: BA2



LARGE APRON — CODE: BA3

6 TRAY MAKEUP CASE

FEATURES

- 6 folding trays



CODE: AL0092

4 TRAY MAKEUP CASE

FEATURES

- 4 folding trays



CODE: AL0042

STUDIO CASE WHEELY

FEATURES

- 6 folding trays with pockets to hold things in place



CODE: ALBA20-1

SOFT SHELL CASE ZIPPER MAKEUP CASE

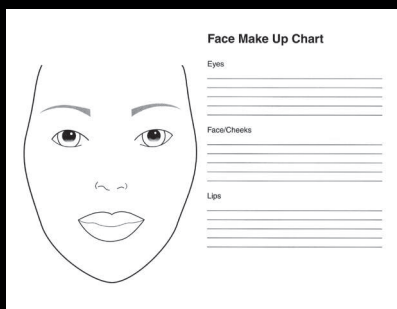


CODE: WB-28B

MAKEUP SHEETS

FEATURES

- 50 sheets



CODE: FMC

SAMPLER POTS WITH LABELS

FEATURES

- 25pk black mini sampler pots
- 5 gm size

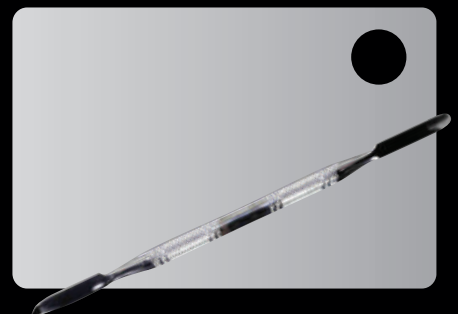


CODE: TP25

MIX PLATE STAINLESS STEEL

FEATURES

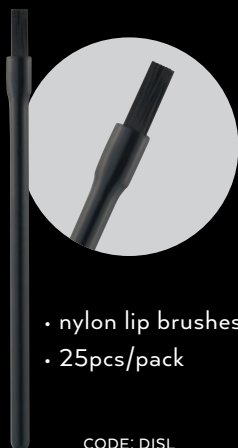
- professional stainless steel mix plate and applicator



CODE: SSMP

DISPOSABLE APPLICATORS

LIPBRUSHES



- nylon lip brushes
- 25pcs/pack

CODE: DISL

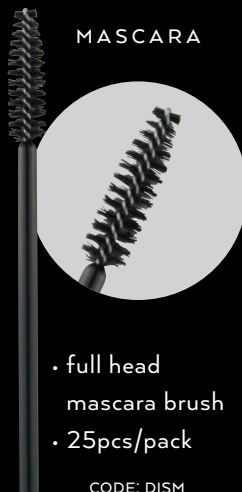
SHADOW



- foam tip with black handle
- 25pcs/pack

CODE: AP

MASCARA



- full head mascara brush
- 25pcs/pack

CODE: DISM

LIPGLOSS



- doe foot lip gloss applicator
- 50pcs/pack

CODE: DISG

SPATULA



- plastic handle
- 25pcs/pack

CODE: SPA

SPONGE

DUAL POWDER

FEATURES

- premium dual sponge available as refills for compacts



CODE: DPS

SPONGE

BLENDING FOAM

FEATURES

- latex free blending sponge
- washable



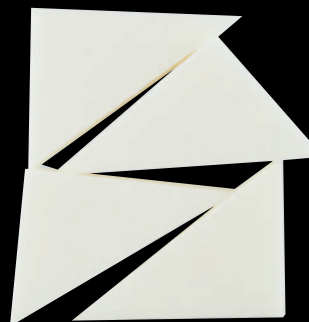
CODE: SOF

WEDGES

FOAM WHITE

FEATURES

- 8 piece latex free wedge block



CODE: WE

WEDGES

FOAM BLACK

FEATURES

- 24 piece latex free wedge block



CODE: WEB

LASH CURLER

METAL

FEATURES

- easy grip handle



CODE: ELC

SHARPENER

DUAL

FEATURES

- black dual sharpener



CODE: SHA

SPONGE

STIPPLE

FEATURES

- 12 piece block



CODE: SS12

COVERS

CLEAR LIPSTICK

FEATURES

- available in 10pk / 28pk / 40pk



CODE: LSC10 / LSC28 / LSC40

EYELASHES

FEATURES

- extra fine
- criss-cross layering
- adds volume and subtle length
- light volume
- wispy • natural effect
- * available in synthetic hair



DUCHESS
NATURAL & FULL



NEFERTITI
DRAMATIC *



GAZELLE
CORNER *



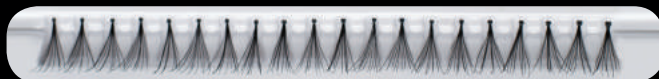
FEATHER
DEMI-NATURAL HAIR



BELEZA
VOLUMIZING



DISCREET
SHORT INDIVIDUAL *



EVERAFTER
MEDIUM INDIVIDUAL *

STUCK ON YOU

EYELASH ADHESIVE



DUO LASH
ADHESIVE - DARK
CODE: DUO-D



DUO LASH
ADHESIVE - CLEAR
CODE: DUO-C



BRUSH ON
ADHESIVE CLEAR
CODE: DUO-BC

LAY IT ON ME

EYELASH APPLICATOR



CODE: EA

BLAK LABEL

pinnacle
cosmetics
professional private label

EUROPE CATALOGUE

ABOUT US

PRODUCTS

Pinnacle Private Label cosmetics specializes in high quality products with an extensive colour selection. We pride ourselves in using only the very highest standards of pigments and ingredients.

NO MINIMUMS

You get exactly what you want, when you want it. Orders shipped and delivered within 7-10 business days. All our products come individually black boxed.

OPTION 1

Order our product as is.

OPTION 2

We brand each product with your logo, professionally printed.

WE'RE ONLINE

All our products can be viewed on our site. Visit www.pinnaclecosmetics.com

CALL US

WORLDWIDE — 1.800.368.0371
Speak direct with a Brand Manager — we will answer any questions and get you started in developing your cosmetic line.

VISIT OUR SHOWROOM

We have a private showroom that you can visit and where you can pick out your cosmetics. You will have a brand manager assist you during the entire process of selecting the products best suited for you and your business. Call for an appointment.

SKYPE APPOINTMENTS

Can't make it to our showroom? No problem. We do appointments via Skype — call to book the Skype studio.

TRADE SHOWS

Please check our website to see when we are visiting your city.



DARE TO BE DIFFERENT, create a line with your name on it. I did.

Vita PRESIDENT
PRODUCT DEVELOPER



PRIVATE LABELLING



CREATE YOUR OWN BRAND

We offer you your own private label line. An extensive luxury cosmetic line with a full range of high quality skincare products professionally printed with your logo.

QUANTITIES

Absolutely NO MINIMUMS!

START UP COSTS

A one time plate charge of only \$160.00 for makeup.
A one time plate charge of only \$160.00 for skincare.
A one time plate charge of only \$160.00 for pencils.

PRINT CHARGE

\$25.00 set up fee per order.
Plus \$0.25 per container print.

ARTWORK

We require the logo in a high-resolution format (at least 300dpi). Black text on a white background is preferred.

PAYMENT

The one time plate payment(s) is required in full to proceed with layouts. Orders require 100% pre-authorized payment.

SET UP AN ACCOUNT

We just need your business address and credit card number.

COLOURS

Logo colour can be discussed upon approval.
We suggest black, silver or gold.

DELIVERY

Please allow approximately 2-3 weeks for the first order. This allows time to produce artwork, obtain final approval, produce stock and deliver.

Repeat orders allow 7-10 business days.

*all pricing subject to change without notice

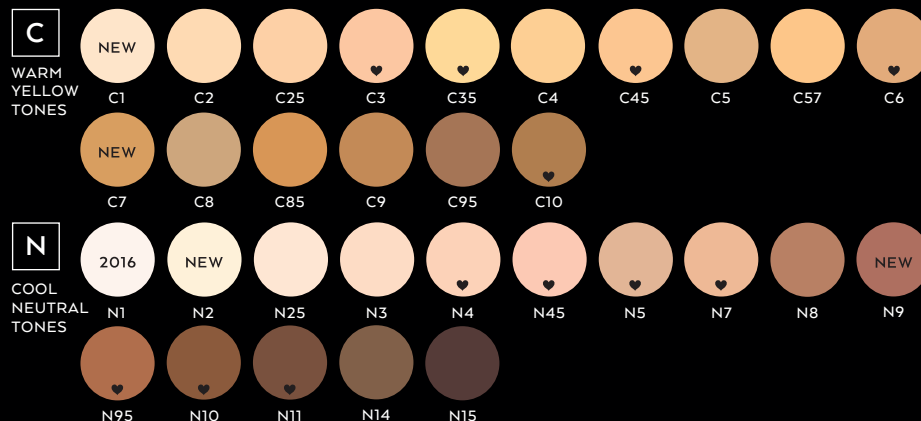


DUAL POWDER FOUNDATION

FULL COVERAGE FOUNDATION

FEATURES

- foundation and powder all in one
- medium to full coverage
- use as a foundation with brush or sponge
- use for touch ups
- will not settle into fine lines
- use on top of any liquid or cream foundation to set or add coverage
- use dampened sponge for full coverage foundation (for oily skin)

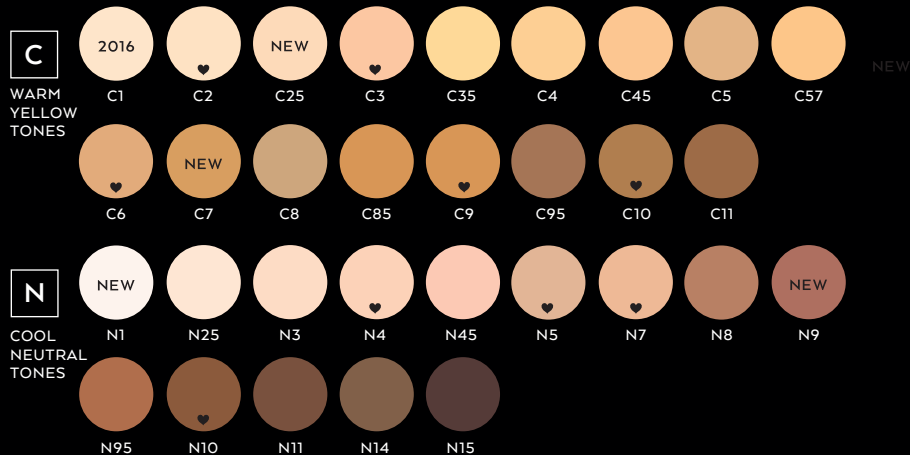


LOOSE POWDER

TRANSLUCENT

FEATURES

- lightweight powder that removes shine or oil without buildup
- matches skin tone without buildup
- mattifies skin
- contains oil absorbing powders
- will not settle into fine lines





BROW SHADOW

H I - B R O W P O W D E R

FEATURES

- formulated to give brows a natural definition
- matte powder formula to fill in uneven brow line



BROW WAX

P O M A D E

FEATURES

- clear brow wax to tame brows
- enhances a clean modern line
- apply after brow shadow
- keeps stray hairs in place
- easy to apply with angle brow brush #15
- apply sparingly



TRANS-
PARENT
BROW WAX



SPOT LIGHT - STROBING

S H I M M E R P O W D E R

FEATURES

- triple milled formula
- more pearlized than blush
- sheer and translucent sheen
- not sparkly but glowing
- can be used as illuminator or strobing powder on face or body
- can be used on eyes
- use as a highlighter

SHADE GUIDE

Fair skin - use champagne tones
Light to medium skin - use pink champagne tones

Olive skin - use gold tones
Dark skin - use terra cotta tones





BLUSH

TRIPLE-MILLED

FEATURES

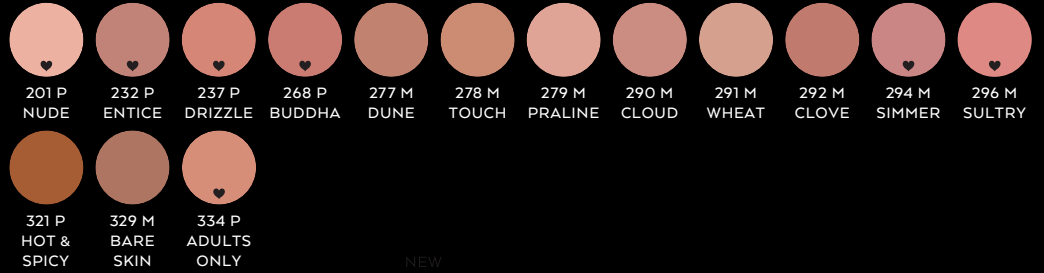
- triple milled fine powders
- highly pigmented
- use after face powder
- 80 shades available
- lightweight texture glides smoothly and evenly
- Available for: contour powder

TEXTURES

P - Pearlized or Frosted

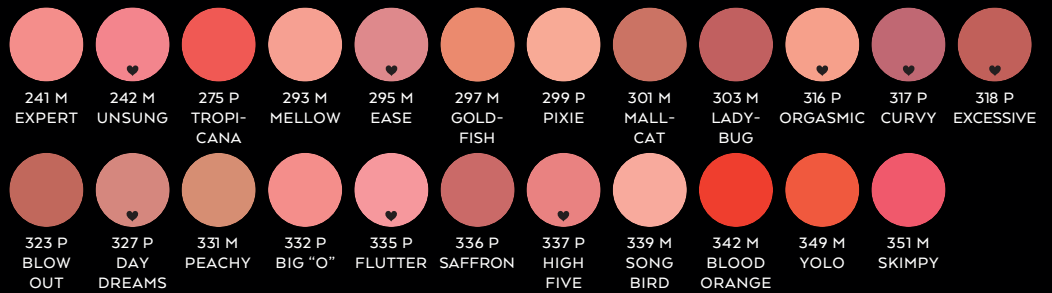
M - Matte

NEUTRALS & BRONZES

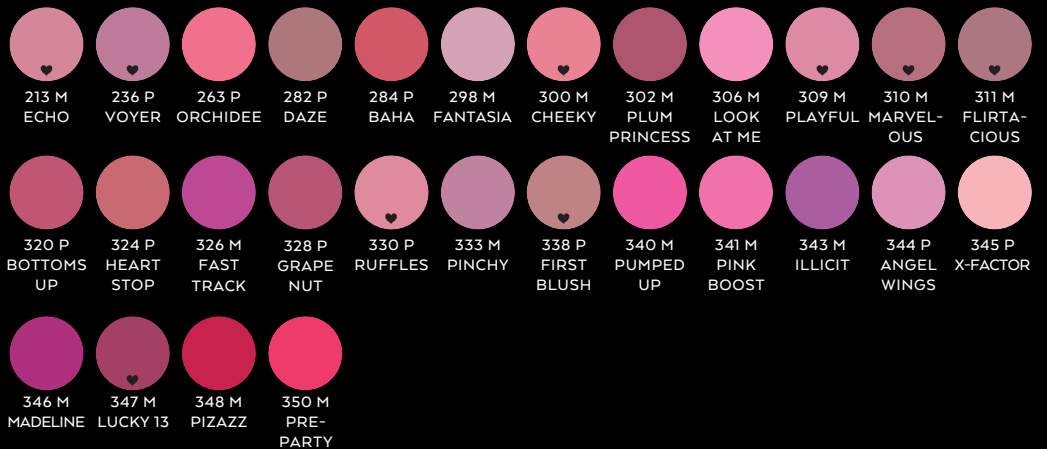


NEW

WARM PINKS, PEACHES & CORALS



COOL PINKS, MAUVES & REDS



UNIVERSAL



700 M
UNIVERSAL
FOR ALL
SKIN TONES



BRONZER COMPACT

PRESSED BRONZER

FEATURES

- triple milled powders that give a sheer fine sun-filled glow
- apply with a buffer or powder brush to the high points of the face where the sun naturally hits

SHADE GUIDE

100 - a light pearl tan for fair olive tones
 200 - works with most olive yellow based tones
 300 - a medium matte tone

400 - a rich terracotta tone with flecks of gold
 407 - works with most cool neutral tones, has a slight touch of pink
 500 - a deep rich earthy tone for darker skins

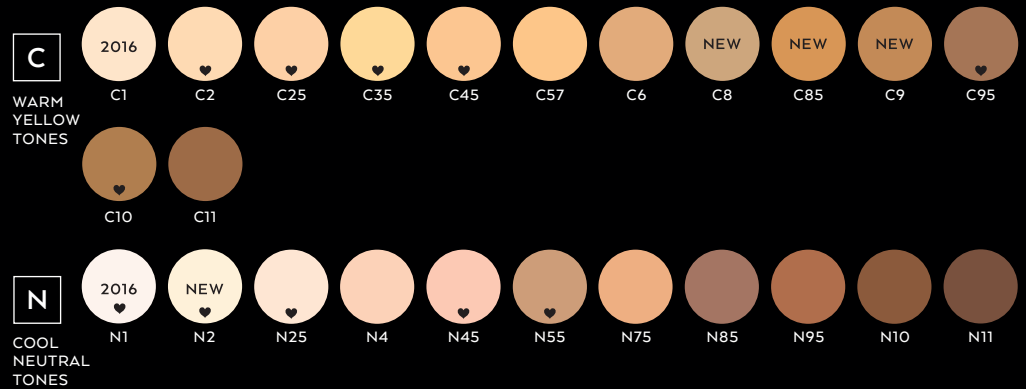


LIQUID CONCEALER

UNDER COVER

FEATURES

- liquid concealer
- medium coverage
- quick dry
- water resistant longwear formula
- anti-aging formula with collagen helps reduce puffiness
- non transferable to clothes stay put formula



PRIME TIME

EYE & LIP PRIMER

FEATURES

- primer for eye and lip area
- prevents lipstick from feathering
- prevents eyeshadow from wearing off or blending unevenly
- perfect for sensitive skin
- perfect for anyone who has trouble with eye makeup smudging or hot flashes
- helps keep shadow on all day

TIP

Apply sparingly in a light tapping motion or with a concealer brush.





EYESHADOW

TRIPLE MILLED EYESHADOW

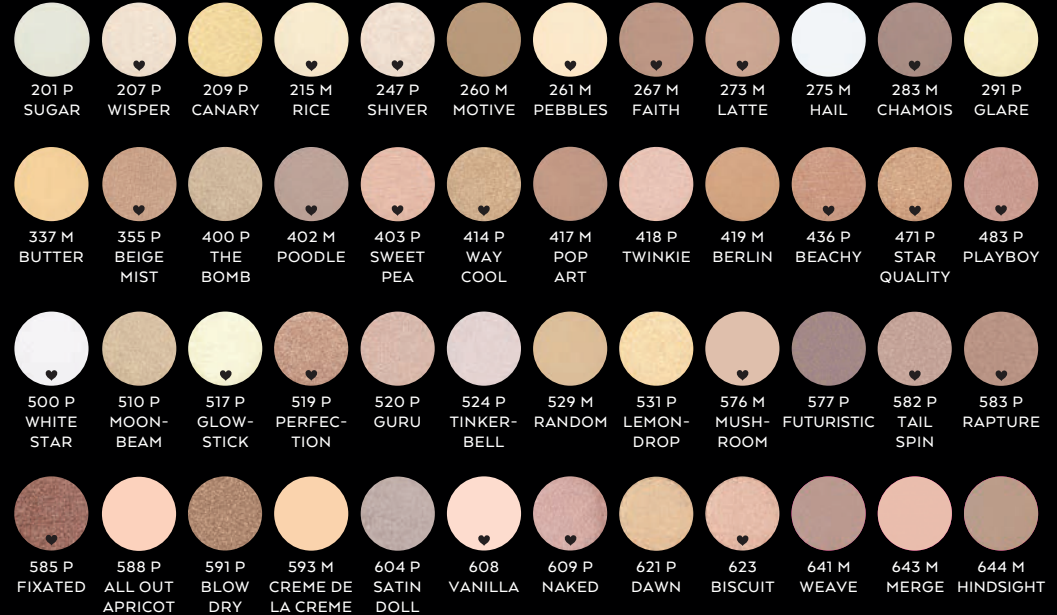
FEATURES

- triple milled
- highly pigmented
- all available as refills
- over 200 shades to choose from
- can be used wet as an eyeliner — we suggest liquid transformer

TEXTURES:

P - Pearlized or frosted M - Matte, no pearl

NEUTRALS & HIGHLIGHTS



BRONZES & BROWNS



COPPERS, PEACHES & GOLDS



WARM & COOL PINKS



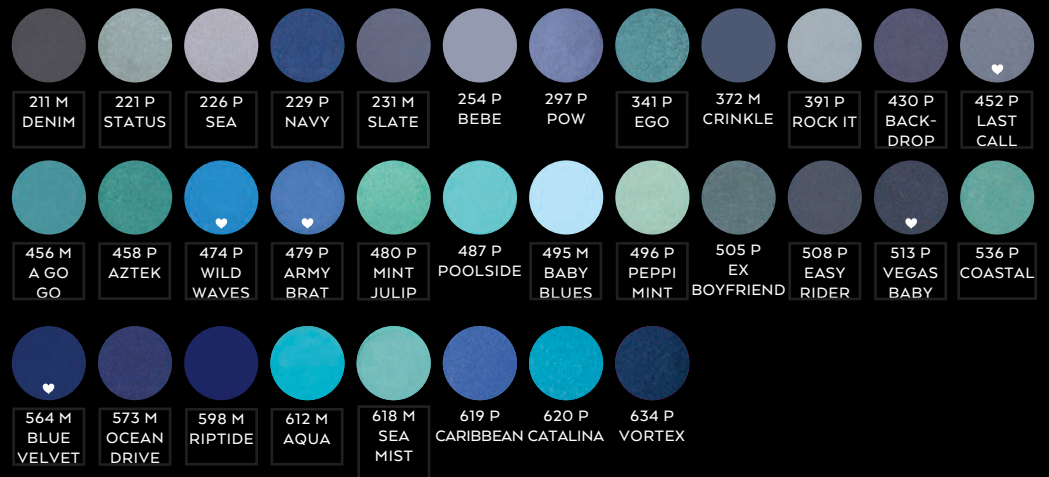
WINES & PURPLES



GREYS,
CHARCOALS
& BLACKS



TURQUOISE
& BLUES



GREENS



CLASSIC FINE LINER

EYELINER

FEATURES

- long wear formula
- quick drying
- fine tip applicator for detail application
- full coverage ink-like application



BLACK



LIQUID SHIMMER

SHIMMER LOTION

FEATURES

- shimmer under the brow bone
- lasts 18 hours
- waterproof
- smudge proof — dries instantly
- light reflecting pigments
- can be used on face or body as liquid shimmer



300 CHROME 301 PURITY 302 TREASURE



LIPGLOSS

LUXURY

FEATURES

- slightly tacky texture (designed for longwear)
- contains natural vanillin extract
- super pigmented
- stays on longer than any other lipgloss
- contains antioxidant Vitamin E
- and retains its colour

TEXTURES

C - Creamy P - Pearlized S - Sheer

NUDES, NEUTRALS & BROWNS



TIP

Wear with co-ordinating lip liner to increase intensity and wearability.



PINKS, FUSCHIAS & PURPLES



PEACHES, CORALS, COPPERS & REDS



GLITTER



LIQUID VELVET LIP

LONGWEAR LIQUID LIPSTICK

FEATURES

- velvet creamy liquid lipstick
- light weight and longwear
- highly pigmented
- dries to matte
- will not feather



EU INGREDIENTS

CAMERA READY

Caprylyl Methicone, Glycerin, Aqua, PEG-12 Dimethicone/PPG-20 Crosspolymer, Caprylic/Capric Triglyceride, Phenoxyethanol.

PRIME TIME

Polybutene, Cera Alba, C15-19 Alkane, Silica, Calcium Aluminum Borosilicate, Ozokerite, Polyethylene, Caprylyl Glycol, Bisabolol, Aqua, Tocopheryl Acetate, Phenoxyethanol, Sorbic Acid, CI 77891, CI 77163, CI 77492, CI 77491, CI 77499.

LIQUID CONCEALER

(N55, C25, C57) Aqua, Isododecane, Polybutene, Cetyl PEG/PPG-10/1 Dimethicone, Glycerin, Tridecyl Neopentanoate, Dimethicone, Silica, Hexyl Laurate, Polyglyceryl-4 Isostearate, Glyceryl Behenate/Eicosadioate, Dimethicone Crosspolymer, Stearic Acid, Butylene Glycol, Disodium EDTA, Distearidimonium Hectorite, Iodopropynyl Butylcarbamate, Isopropyl Titanium Triisostearate, PEG-4, PEG-4 Dilaurate, PEG-4 Laurate, Phenoxyethanol, Propylene Carbonate, Sodium Chloride, Sodium Hyaluronate, Sodium Lauroyl Glutamate, Sodium PCA, Sodium Polyacrylate, Sorbitan Sesquioxide, Tocopheryl Acetate, [+/-: CI 77491, CI 77492, CI 77499, CI 77891].

(N45) Aqua, Isododecane, Polybutene, Cetyl PEG/PPG-10/1 Dimethicone, Glycerin, Tridecyl Neopentanoate, Dimethicone, Silica, Hexyl Laurate, Polyglyceryl-4 Isostearate, Glyceryl Behenate/Eicosadioate, Stearic Acid, Dimethicone Crosspolymer, Butylene Glycol, Disodium EDTA, Distearidimonium Hectorite, Iodopropynyl Butylcarbamate, Isopropyl Titanium Triisostearate, PEG-4, PEG-4 Dilaurate, PEG-4 Laurate, Phenoxyethanol, Propylene Carbonate, Sodium Chloride, Sodium Hyaluronate, Sodium Lauroyl Glutamate, Sodium PCA, Sodium Polyacrylate, Sorbitan Sesquioxide, Tocopheryl Acetate, [+/-: CI 77491, CI 77492, CI 77499, CI 77891].

(N25, N10, N4, C45, C2) Aqua, Isododecane, Cetyl PEG/PPG-10/1 Dimethicone, Polybutene, Glycerin, Tridecyl Neopentanoate, Dimethicone, Silica, Hexyl Laurate, Polyglyceryl-4 Isostearate, Glyceryl Behenate/Eicosadioate, Dimethicone Crosspolymer, Stearic Acid, Butylene Glycol, Disodium EDTA, Distearidimonium Hectorite, Iodopropynyl Butylcarbamate, Isopropyl Titanium Triisostearate, PEG-4, PEG-4 Dilaurate, PEG-4 Laurate, Phenoxyethanol, Propylene Carbonate, Sodium Chloride, Sodium Hyaluronate, Sodium Lauroyl Glutamate, Sodium PCA, Sodium Polyacrylate, Sorbitan Sesquioxide, Tocopheryl Acetate, [+/-: CI 77491, CI 77492, CI 77499, CI 77891].

(C35, C10, C6) Aqua, Isododecane, Cetyl PEG/PPG-10/1 Dimethicone, Polybutene, Glycerin, Tridecyl Neopentanoate, Dimethicone, Hexyl Laurate, Polyglyceryl-4 Isostearate, Silica, Glyceryl Behenate/Eicosadioate, Stearic Acid, Dimethicone Crosspolymer, Butylene Glycol, Disodium EDTA, Distearidimonium Hectorite, Iodopropynyl Butylcarbamate, Isopropyl Titanium Triisostearate, PEG-4, PEG-4 Dilaurate, PEG-4 Laurate, Phenoxyethanol, Propylene Carbonate, Sodium Chloride, Sodium Hyaluronate, Sodium Lauroyl Glutamate, Sodium PCA, Sodium Polyacrylate, Sorbitan Sesquioxide, Tocopheryl Acetate, [+/-: CI 77491, CI 77492, CI 77499, CI 77891].

(C11) Aqua, Isododecane, Cetyl PEG/PPG-10/1 Dimethicone, Polybutene, Glycerin, Hexyl Laurate, Polyglyceryl-4 Isostearate, Tridecyl Neopentanoate, Dimethicone, Silica, Glyceryl Behenate/Eicosadioate, Dimethicone Crosspolymer, Stearic Acid, Butylene Glycol, Disodium EDTA, Distearidimonium Hectorite, Iodopropynyl Butylcarbamate, Isopropyl Titanium Triisostearate, PEG-4, PEG-4 Dilaurate, PEG-4 Laurate, Phenoxyethanol, Propylene Carbonate, Sodium Chloride, Sodium Hyaluronate, Sodium Lauroyl Glutamate, Sodium PCA, Sodium Polyacrylate, Sorbitan Sesquioxide, Tocopheryl Acetate, [+/-: CI 77491, CI 77492, CI 77499, CI 77891].

COVER UP STICK

Isohexyl Caprate, Ethylhexyl Palmitate, Nylon-12, Paraffin, Quartz, Octyldodecyl Stearate, Ozokerite, Cera Microcristallina, Isostearyl Behenate, Hydrogenated Castor Oil, Silica, PPG-12/SMDI Copolymer, Copernicia Cerifera Cera, Retinyl Palmitate, Tocopherol, Tocopheryl Acetate, CI 77891, CI 77492, CI 77491, CI 77499, CI 77015.

CREAM FOUNDATION COMPACT

Isohexyl Caprate, Ethylhexyl Palmitate, Nylon-12, Paraffin, Quartz, Octyldodecyl Stearate, Ozokerite, Cera Microcristallina, Isostearyl Behenate, Hydrogenated Castor Oil, Silica, PPG-12/SMDI Copolymer, Copernicia Cerifera Cera, Retinyl Palmitate, Tocopherol, Tocopheryl Acetate, CI 77891, CI 77492, CI 77491, CI 77499, CI 77015.

DUAL POWDER

(C2, C3, C4, C5, C6, C35, C45, C57, N3, N4, N5, N7, N25, N45) Talc, Mica, Dimethicone, Nylon-12, Aluminum Dimyristate, Zinc Stearate, Ascorbyl Palmitate, Imidazolidinyl Urea, Tocopherol, [+/-: CI 77007, CI 77288, CI 77491, CI 77492, CI 77499, CI 77891].

HI-DEF FOUNDATION

(C57, C25, N55, N45) Aqua, Isododecane, Polybutene, Cetyl PEG/PPG-10/1 Dimethicone, Glycerin, Dimethicone, Dimethicone Crosspolymer, Tridecyl Neopentanoate, Silica, Hexyl Laurate, Polyglyceryl-4 Isostearate, Glyceryl Behenate/Eicosadioate, Stearic Acid, Butylene Glycol, Cyclohexasiloxane, Disodium EDTA, Distearidimonium Hectorite, Iodopropynyl Butylcarbamate,

Isopropyl Titanium Triisostearate, PEG-4, PEG-4 Dilaurate, PEG-4 Laurate, Phenoxyethanol, Propylene Carbonate, Sodium Chloride, Sodium Hyaluronate, Sodium Lauroyl Glutamate, Sodium PCA, Sodium Polyacrylate, Sorbitan Sesquioxide, Tocopheryl Acetate, [+/-: CI 77491, CI 77492, CI 77499, CI 77891].

(N75, N25, N4, C45, C35, C6, C2) Aqua, Isododecane, Cetyl PEG/PPG-10/1 Dimethicone, Polybutene, Glycerin, Dimethicone, Dimethicone Crosspolymer, Tridecyl Neopentanoate, Hexyl Laurate, Polyglyceryl-4 Isostearate, Silica, Glyceryl Behenate/Eicosadioate, Stearic Acid, Butylene Glycol, Cyclohexasiloxane, Disodium EDTA, Distearidimonium Hectorite, Iodopropynyl Butylcarbamate, Isopropyl Titanium Triisostearate, PEG-4, PEG-4 Dilaurate, PEG-4 Laurate, Phenoxyethanol, Propylene Carbonate, Sodium Chloride, Sodium Hyaluronate, Sodium Lauroyl Glutamate, Sodium PCA, Sodium Polyacrylate, Sorbitan Sesquioxide, Tocopheryl Acetate, [+/-: CI 77491, CI 77492, CI 77499, CI 77891].

FACE MAKEUP

(C3, C4, C5, C8, C10, N2, N3, N5, N9, N25, N45) Aqua, Cyclopentasiloxane, Isododecane, Methyl Trimethicone, Cyclohexasiloxane, Glycerin, Polymethyl Methacrylate, Mica, Bis-Vinyl Dimethicone/Dimethicone Copolymer, Cetyl PEG/PPG-10/1 Dimethicone, Phenoxyethanol, Sodium Chloride, Stearic Acid, Aluminum Dimyristate, Dimethicone, Disodium Stearoyl Glutamate, Distearidimonium Hectorite, Ethylhexylglycerin, Glyceryl Stearate, Hexadecene, Hydrogenated Lecithin, Magnesium Stearate, PEG-100 Stearate, Pentaerythrityl Tetra-Di-T-Butyl Hydroxyhydrocinnamate, Potassium Sorbate, Triethoxycaprylylsilane, [CI 77491, CI 77492, CI 77499, CI 77891].

LOOSE POWDER

(C2, C3, C4, C6, N2, N3, N4, N5, N7) Talc, Zinc Stearate, Boron Nitride, Caprylyl Glycol, Mica, Octyldodecyl Stearoyl Stearate, Phenoxyethanol, Sorbic Acid, [+/-: CI 15985, CI 77491, CI 77492, CI 77499, CI 77742, CI 77891].

CONTOUR POTS

Talc, Mica, Bismuth Oxochloride, Boron Nitride, Zinc Stearate, Octyldodecyl Stearoyl Stearate, Silica, Ethylhexyl Palmitate, Phenoxyethanol, Tin Oxide, [+/-: CI 77891, CI 77492, CI 77491, CI 77499, CI 77400, CI 77000].

COLOUR CORRECTORS / CONCEALER POT

Isohexyl Caprate, Ethylhexyl Palmitate, Nylon-12, Paraffin, Quartz, Octyldodecyl Stearate, Ozokerite, Cera Microcristallina, Isostearyl Behenate, Hydrogenated Castor Oil, Silica, PPG-12/SMDI Copolymer, Copernicia Cerifera Cera, Retinyl Palmitate, Tocopherol, Tocopheryl Acetate, [+/-: CI 77891, CI 77492, CI 77491, CI 77499, CI 77015] Avoid contact with eyes. If any adverse reaction occurs,

CONCEALER TRIO

Isohexyl Caprate, Ethylhexyl Palmitate, Nylon-12, Paraffin, Quartz, Octyldodecyl Stearate, Ozokerite, Cera Microcristallina, Isostearyl Behenate, Hydrogenated Castor Oil, Silica, PPG-12/SMDI Copolymer, Copernicia Cerifera Cera, Retinyl Palmitate, Tocopherol, Tocopheryl Acetate, [+/-: CI 77891, CI 77492, CI 77491, CI 77499, CI 77015] Avoid contact with eyes. If any adverse reaction occurs, stop using the product. Inform your doctor if your condition persists. Warning: Avoid during pregnancy. Acetate, [+/-: CI 77891, CI 77492, CI 77491, CI 77499, CI 77015] Avoid contact with eyes. If any adverse reaction occurs,

BROW SHADOW

(493, 494, 529, 356, 533, 306, 286, 261, 255, 212, 607) Talc, Octyldodecyl Stearoyl Stearate, Mica, Zinc Stearate, Ethylhexyl Palmitate, Boron Nitride, Phenoxyethanol, Silica, [+/-: CI 77163, CI 77266, CI 77491, CI 77492, CI 77499, CI 77742, CI 77891].

BROW SHADOW

(588, 403, 247) Talc, Mica, Octyldodecyl Stearoyl Stearate, Zinc Stearate, Ethylhexyl Palmitate, Boron Nitride, Phenoxyethanol, Silica, Tin Oxide, [+/-: CI 75470, CI 77015, CI 77491, CI 77492, CI 77499, CI 77742, CI 77891].

(464, 334, 260) Talc, Mica, Octyldodecyl Stearoyl Stearate, Zinc Stearate, Ethylhexyl Palmitate, Boron Nitride, Phenoxyethanol, Silica, [+/-: CI 77288, CI 77491, CI 77492, CI 77499, CI 77891].

(414) Mica, Talc, Octyldodecyl Stearoyl Stearate, Zinc Stearate, Ethylhexyl Palmitate, Boron Nitride, Phenoxyethanol, Silica, Tin Oxide, [+/-: CI 77491, CI 77492, CI 77499, CI 77891].

(14) Talc, Octyldodecyl Stearoyl Stearate, Zinc Stearate, Mica, Ethylhexyl Palmitate, Boron Nitride, Phenoxyethanol, Silica, Tin Oxide, [+/-: CI 75470, CI 77491, CI 77492, CI 77499, CI 77891].

BROW FIXX

(Clear) Aqua, Alcohol Denat., VP/VA Copolymer, Propanediol, Acrylates/C10-30 Alkyl Acrylate Crosspolymer, Benzyl Alcohol, Citric Acid, Disodium EDTA, Ethylhexylglycerin, Hydrolyzed Vegetable Protein PG-Propyl Silanetriol, Hydrolyzed Wheat Protein/PVP Crosspolymer, Panthenol, Phenoxyethanol, Potassium Sorbate, Sodium Hydroxide.

EU INGREDIENTS

(1, 4, 5) Aqua, Cera Alba, Acacia Senegal Gum, Stearic Acid, Acrylates/Ethylhexyl Acrylate Copolymer, Cetyl Alcohol, VP/Hexadecene Copolymer, Sorbitol, Aminomethyl Propanediol, Benzyl Benzoate, Caprylyl Glycol, Chlorphenesin, Copernicia Cerifera Cera, Disodium EDTA, Hydrogenated Polyisobutene, Hydroxyethylcellulose, Iodopropynyl Butylcarbamate, Laureth-23, Limonene, Linalool, Magnesium Aluminum Silicate, Parfum, PEG-4, PEG-4 Dilaurate, PEG-4 Laurate, Phenoxyethanol, Simethicone, Tocopheryl Acetate, [+/-: CI 77491, CI 77492, CI 77499]

(2, 6) Aqua, Mica, Cera Alba, Acacia Senegal Gum, Stearic Acid, Acrylates/Ethylhexyl Acrylate Copolymer, Cetyl Alcohol, VP/Hexadecene Copolymer, Sorbitol, Aminomethyl Propanediol, Benzyl Benzoate, Caprylyl Glycol, Chlorphenesin, Copernicia Cerifera Cera, Disodium EDTA, Hydrogenated Polyisobutene, Hydroxyethylcellulose, Iodopropynyl Butylcarbamate, Laureth-23, Limonene, Linalool, Magnesium Aluminum Silicate, Parfum, PEG-4, PEG-4 Dilaurate, PEG-4 Laurate, Phenoxyethanol, Simethicone, Tocopheryl Acetate, [+/-: CI 77163, CI 77491, CI 77499, CI 77891]

BROW WAX

Octyldodecyl Stearoyl Stearate, Cera Microcristallina, Caprylic/Capric Triglyceride, Ricinus Communis Seed Oil, Cera Alba, Boron Nitride, Euphorbia Cerifera Cera, Ozokerite, Silica, Copernicia Cerifera Cera, Aluminum Starch Octenylsuccinate, Caprylyl Glycol, Octyldodecanol, Mica, Tocopheryl Acetate, Isopropyl Myristate, Lauroyl Lysine, Simmondsia Chinensis Seed Oil, Phenoxyethanol, Sorbic Acid, CI 77891, CI 77492, CI 77491, CI 77499. **EYESHADOW** Talc, Mica, Boron Nitride, Zinc Stearate, Octyldodecyl Stearoyl Stearate, Octyldodecyl Stearate, Silica, Phenoxyethanol, Caprylyl Glycol, Sorbic Acid, [+/-: CI 77891, CI 77861, CI 77492, CI 77491, CI 77499, CI 19140, CI 42090, CI 16035, CI 77163, CI 77266, CI 75470, CI 77288, CI 77289, CI 77510, CI 77742].

EYE LIGHTS

(300, 301) Aqua, Mica, Glycerin, Pentylene Glycol, Acrylates/C10-30 Alkyl Acrylate Crosspolymer, Aloe Barbadensis Leaf Juice Powder, Benzyl Alcohol, Dehydroacetic Acid, Glyceryl Acrylate/Acrylic Acid Copolymer, Iodopropynyl Butylcarbamate, PEG-4, PEG-4 Dilaurate, PEG-4 Laurate, Phenoxyethanol, Silica, Sodium Hydroxide, [+/-: CI 77491, CI 77499, CI 77891].

(302) Aqua, Mica, Glycerin, Pentylene Glycol, Acrylates/C10-30 Alkyl Acrylate Crosspolymer, Aloe Barbadensis Leaf Juice Powder, Benzyl Alcohol, Dehydroacetic Acid, Glyceryl Acrylate/Acrylic Acid Copolymer, Iodopropynyl Butylcarbamate, PEG-4, PEG-4 Dilaurate, PEG-4 Laurate, Phenoxyethanol, Silica, Sodium Hydroxide, Tin Oxide, [+/-: CI 77491, CI 77891].

EYE PENCIL

C10-18 Triglycerides, Hydrogenated Vegetable Oil, Caprylic/Capric Triglyceride, Talc, Rhus Succedanea Fruit Cera, Tocopherol, Ascorbyl Palmitate, CI 77499, CI 77510.

MASCARA INTENSE

Aqua, Copernicia Cerifera Cera, Glyceryl Stearate, Polybutene, Kaolin, Stearic Acid, Oleic Acid, Palmitic Acid, Triethanolamine, Acrylates Copolymer, Hydroxyethylcellulose, Caprylyl Glycol, Ethylhexylglycerin, Glycerin, Propylene Glycol, Tocopheryl Acetate, Panthenol, Retinyl Palmitate, Trehalose, Ascorbyl Palmitate, Dimethicone, PEG-30 Stearate, PEG-32, Silica Dimethyl Silylate, Cyclotetrasiloxane, Sodium Hyaluronate, Phenoxyethanol, Potassium Sorbate, Sorbic Acid, CI 77499.

LIQUID LINER DEFINE

Aqua, Glycerin, Mica, PEG-33, Acrylates/Beheneth-25 Methacrylate Copolymer, PEG-8 Dimethicone, Silica, Triethanolamine, PEG-14, Caprylyl Glycol, Phenoxyethanol, Sorbic Acid, CI 77499, CI 77266. If any adverse reaction occurs, stop using the product. Inform your doctor if your condition persists.

BLUSH

Talc, Mica, Boron Nitride, Zinc Stearate, Octyldodecyl Stearoyl Stearate, Octyldodecyl Stearate, Caprylyl Glycol, Phenoxyethanol, Sorbic Acid, [+/-: CI 77002, CI 77491, CI 77492, CI 77499, CI 19140, CI 15985, CI 42090, CI 77891, CI 77163, CI 75470, CI 15850, CI 45410, CI 77742, CI 77007, CI 77400, CI 77861].

SHEER GLO

Aqua, Cyclopentasiloxane, Propylene Glycol, Cyclohexasiloxane, Dimethicone, Mica, Stearic Acid, Rosa Damascena Flower Water, Triethanolamine, Argilla, Isostearic Acid, Glyceryl Distearate, Oleth-20, Steareth-2, Glyceryl Monostearate, Glycerin, Xanthan Gum, Cellulose Gum, Tocopheryl Acetate, Tetrasodium EDTA, Disodium EDTA, Diazolidinyl Urea, Methylparaben, Propylparaben, CI 77891, CI 77491.

BRONZER COMPACT

(407) Talc, Mica, Octyldodecyl Stearate, Octyldodecyl Stearoyl Stearate, Zinc Stearate, Boron Nitride, Aluminum Starch Octenylsuccinate, Caprylyl Glycol, Lauroyl Lysine, Tin Oxide, Phenoxyethanol, Sorbic Acid, CI 77491, CI 77891, CI 77499, CI 77492, CI 15985.

(100, 300) Talc, Mica, Zinc Stearate, Octyldodecyl Stearoyl Stearate, Boron Nitride, Ethylhexyl Palmitate, Phenoxyethanol, Silica, [+/-: CI 15880, CI 15985, CI 77491, CI 77492, CI 77499, CI 77742, CI 77891].

(200, 500) Talc, Mica, Octyldodecyl Stearoyl Stearate, Zinc Stearate, Boron Nitride, Ethylhexyl Palmitate, Phenoxyethanol, Silica, Tin Oxide [+/-: CI 15880, CI 77491, CI 77492, CI 77499, CI 77742, CI 77891].

(400) Talc, Mica, Zinc Stearate, Octyldodecyl Stearoyl Stearate, Calcium Aluminum Borosilicate, Boron Nitride, Ethylhexyl Palmitate, Phenoxyethanol, Silica, Tin Oxide [+/-: CI 15850, CI 15985, CI 75120, CI 77491, CI 77492, CI 77499, CI 77891].

MINERAL FOUNDATION

(C6, C85, N5, N11) Mica, Magnesium Carbonate, Alumina, Methicone, Phenoxyethanol, Simmondsia Chinensis Seed Oil, Zinc Stearate, [+/-: CI 77163, CI 77491, CI 77492, CI 77499, CI 77891].

(C2, C3, C4, C5, N3, N4, N7) Mica, Talc, Magnesium Carbonate, Alumina, Methicone, Phenoxyethanol, Simmondsia Chinensis Seed Oil, Zinc Stearate, [+/-: CI 19140, CI 77163, CI 77491, CI 77492, CI 77499, CI 77742, CI 77891].

LIPSTICK

Ricinus Communis Seed Oil, Lanolin Oil, Octyldodecanol, Propylene Glycol Ricinoleate, Euphorbia Cerifera Cera, Isopropyl Lanolate, Oleyl Alcohol, Lanolin, Ozokerite, Mica, Paraffin, Polybutene, Copernicia Cerifera Cera, Ascorbyl Palmitate, Ethylhexyl Palmitate, Glycine Soja Oil, Lactic Acid, Palmitoyl Oligopeptide, Sorbitan Isostearate, Tocopherol, Tribehenin, Vanillin, CI 15850, CI 15880, CI 19140, CI 42090, CI 45380, CI 77491, CI 77492, CI 77499, CI 77891.

LIPSTICK XTREME

Ricinus Communis Seed Oil, Lanolin Oil, Octyldodecanol, Propylene Glycol Ricinoleate, Euphorbia Cerifera Cera, Isopropyl Lanolate, Oleyl Alcohol, Lanolin, Ozokerite, Mica, Paraffin, Polybutene, Copernicia Cerifera Cera, Ascorbyl Palmitate, Ethylhexyl Palmitate, Glycine Soja Oil, Lactic Acid, Palmitoyl Oligopeptide, Sorbitan Isostearate, Tocopherol, Tribehenin, Vanillin, CI 15850, CI 15880, CI 19140, CI 42090, CI 45380, CI 77491, CI 77492, CI 77499, CI 77891.

LIPGLOSS

Polybutene, Pentaerythrityl Tetraistearate, Tridecyl Trimellitate, Ricinus Communis Seed Oil, C18-36 Acid Triglyceride, PEG-8, Vanillin, Ascorbyl Palmitate, Sodium Saccharin, Glycine Soja Oil, Tocopherol, Colophonium, CI 77891, CI 77491, CI 77499, CI 77120, CI 42090, CI 15850.

LIP PENCIL

Stearic Acid, Mica, Hydrogenated Vegetable Oil, Paraffinum Liquidum, Cetyl Palmitate, Rhus Seccedanea Fruit Cera, C10-18 Triglycerides, Hydrogenated Coco-Glycerides, Hydrogenated Castor Oil, Butyl Stearate, Tristearin, Stearyl Heptanoate, Synthetic Wax, Talc, Stearyl Caprylate, BHT, Propylparaben, Methylparaben, CI 77491, CI 15850, CI 77891, CI 77499, CI 77492.

MATTE LIQUID LIPSTICK

(201, 208, 215, 217, 234, 236) Isododecane, Octyldodecanol, Polybutene, Silica, Kaolin, Quaternium-90 Bentonite, Cera Alba, Mica, Aqua, Aroma, Benzyl Benzoate, Caprylyl Glycol, Phenoxyethanol, Propylene Carbonate, Sorbic Acid, Tocopheryl Acetate, Triethoxycaprylylsilane, [+/-: CI 15850, CI 17200, CI 19140, CI 45410, CI 77491, CI 77492, CI 77499, CI 77742, CI 77891].

(235) Isododecane, Octyldodecanol, Polybutene, Mica, Silica, Kaolin, Quaternium-90 Bentonite, Cera Alba, Aqua, Aroma, Benzyl Benzoate, Caprylyl Glycol, Phenoxyethanol, Propylene Carbonate, Sorbic Acid, Tocopheryl Acetate, Triethoxycaprylylsilane, [+/-: CI 15850, CI 77491, CI 77499, CI 77891].

(220, 224) Isododecane, Octyldodecanol, Polybutene, Silica, Kaolin, Quaternium-90 Bentonite, Cera Alba, Aqua, Aroma, Benzyl Benzoate, Caprylyl Glycol, Phenoxyethanol, Propylene Carbonate, Sorbic Acid, Tocopheryl Acetate, Triethoxycaprylylsilane, [+/-: CI 15850, CI 77200, CI 19140, CI 77499, CI 77891].

(221) Isododecane, Octyldodecanol, Polybutene, Silica, Mica, Kaolin, Quaternium-90 Bentonite, Cera Alba, Synthetic Flourphlogopite, Aqua, Aroma, Benzyl Benzoate, Caprylyl Glycol, Phenoxyethanol, Propylene Carbonate, Sorbic Acid, Tin Oxide, Tocopheryl Acetate, Triethoxycaprylylsilane, [+/-: CI 15850, CI 17200, CI 19140, CI 77491, CI 77499, CI 77891].

(202, 203, 216, 218) Isododecane, Octyldodecanol, Polybutene, Silica, Kaolin, Quaternium-90 Bentonite, Cera Alba, Aqua, Aroma, Benzyl Benzoate, Caprylyl Glycol, Mica, Phenoxyethanol, Propylene Carbonate, Sorbic Acid, Tocopheryl Acetate, Triethoxycaprylylsilane, [+/-: CI 15850, CI 17200, CI 45410, CI 77491, CI 77492, CI 77891].

(205) Isododecane, Octyldodecanol, Polybutene, Silica, Kaolin, Quaternium-90 Bentonite, Cera Alba, Mica, Calcium Aluminum Borosilicate, Aqua, Aroma, Benzyl Benzoate, Caprylyl Glycol, Phenoxyethanol, Propylene Carbonate, Sorbic Acid, Tin Oxide, Tocopheryl Acetate, Triethoxycaprylylsilane, [+/-: CI 15850, CI 17200, CI 42090, CI 45410, CI 77742, CI 77891].

EU INGREDIENTS

VINYL LIP LACQUER

INGREDIENTS: Hydrogenated Polyisobutene, Caprylic/Capric Triglyceride, Polybutene, Mica, Ethylhexyl Palmitate, Tribehenin, Butylene/Ethylene/Styrene Copolymer, Ethylene/Propylene/Styrene Copolymer; Aroma, Benzyl Alcohol, Benzyl Benzoate, Benzyl Cinnamate, Caprylyl Glycol, Lauroyl Lysine, Palmitoyl Tripeptide-1, Phenoxyethanol, Sorbic Acid, Sorbitan Isostearate, Tocopheryl Acetate, [+/-: CI 15850, CI 16035, CI 19140, CI 42090, CI 45410, CI 73360, CI 77491, CI 77492, CI 77499, CI 77742, CI 77891].

LIQUID VELVET LIP

INGREDIENTS: Isododecane, Dimethicone, Trimethylsiloxysilicate, Polybutene, Petrolatum, Silica, Cyclopentasiloxane, Distearidimonium Hectorite, Cera Alba, Kaolin, Cyclohexasiloxane, Propylene Carbonate, Calcium Aluminum Borosilicate, Caprylyl Glycol, Glyceryl Behenate/Eicosadioate, Persea Gratissima Oil, Phenoxyethanol, Silica Dimethyl Silylate, Synthetic Fluorophlogopite, Tin Oxide, Tocopherol, Vanillin, [+/-: CI 15850, CI 42090, CI 75470, CI 77491, CI 77492, CI 77499, CI 77742, CI 77891, Mica].

MINERAL FOUNDATION (PRESSED)

INGREDIENTS: Mica, Dimethicone, Zinc Stearate, Nylon-12, Caprylyl Glycol, Phenoxyethanol, Hexylene Glycol, Tocopherol, Ascorbyl Palmitate, [+/-: CI 77891, CI 77492, CI 77491, CI 77499, CI 77718, CI 77288].

MINERAL FOUNDATION (LOOSE)

INGREDIENTS: Mica, Talc, Magnesium Carbonate, Alumina, Methicone, Phenoxyethanol, Simmondsia Chinensis Seed Oil, Zinc Stearate, [+/-: CI 19140, CI 77163, CI 77491, CI 77492, CI 77499, CI 77742, CI 77891] Avoid contact with eyes. If any adverse reaction occurs, stop using the product. Inform your doctor if your condition persists.

MOUSSE FOUNDATION

INGREDIENTS: Cyclopentasiloxane, Dimethicone Crosspolymer, Isononyl Isononanoate, Cyclomethicone, Mica, Silica, Phenoxyethanol, Aluminum Hydroxide, Dimethicone, Isopropyl Titanium Triisostearate, Limonene, Parfum, Phenyl Trimethicone, Sodium Myristoyl Sarcosinate, Tocopheryl Acetate, [+/-: CI 77491, CI 77492, CI 77499, CI 77891] Avoid contact with eyes. If any adverse reaction occurs, stop using the product. Inform your doctor if your condition persists.

BB CREAM

INGREDIENTS: Aqua, Squalane, Glycerin, Glyceryl Stearate, Benzophenone-3, Ethylhexyl Methoxycinnamate, Ethylhexyl Salicylate, Butylene Glycol, PEG-40 Stearate, Niacinamide, Octyldodecyl Stearoyl Stearate, Phenyl Trimethicone, Aloe Barbadensis Leaf Extract, Aluminum Hydroxide, Ammonium AcryloyldimethylTaurate/VP Copolymer, Anthemis Nobilis Flower Extract, Ascorbyl Palmitate, BHT, Carbomer, Carthamus Tinctorius Seed Oil, Cetyl Alcohol, Chlorphenesin, Cucumis Sativus Fruit Extract, Dimethicone, Disodium EDTA, Ethylhexyl Palmitate, Laminaria Saccharina Extract, Lecithin, Myristyl Alcohol, Palmitoyl Tetrapeptide-7, Palmitoyl Tripeptide-1, Panax Ginseng Root Extract, Phenoxyethanol, Polymethylsilsesquioxane, Polysorbate-20, Retinyl Palmitate, Silica, Sodium Dehydroacetate, Sodium Hyaluronate, Sodium Lactate, Stearic Acid, Tocopheryl Acetate, Xanthan Gum, [+/-: CI 77491, CI 77492, CI 77499, CI 77891].

WATERPROOF MASCARA

INGREDIENTS: Isododecane, Aqua, Copernicia Cerifera Cera, Candelilla Cera, Kaolin, Cera Alba, Sorbeth-20 Beeswax, Stearic Acid, Acrylates Copolymer, Ozokerite, Silica, VP/Eicosene Copolymer, Cetyl PEG/PPG-10/1 Dimethicone, Phenoxyethanol, Polyisobutene, Triethanolamine, Tocopheryl Acetate, Retinyl Palmitate, Panthenol, Disodium EDTA, Carthamus Tinctorius Seed Oil, Ascorbyl Palmitate, Propylene Glycol, Aloe Barbadensis Leaf Extract, Chamomilla Recutita Flower Extract, Ginkgo Biloba Leaf Extract, Panax Ginseng Root Extract, Citric Acid, Potassium Sorbate, CI 77499.