

PINNACLE COSMETICS

FACEWARE



FACEWARE COSMETICS WITH
SKIN-PERFECTING INGREDIENTS ALLOWING
YOU TO PUT YOUR BEST FACE FORWARD.

Foundations and micro powders help
brighten dull uneven skin tones.

Our over achieving formulations have you covered
with a variety of textures from:

- Sheer to full coverage • Lightweight
- Longwearing • Paraben free • Hypo-allergenic
- Fragrance free • Sensitivity tested



Best-Sellers

NEW
New Product

TIP

Application Tips

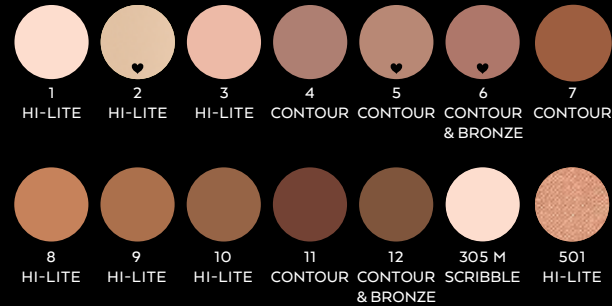


CONTOUR POWDER

POWDER FINISH

FEATURES

- blendable formulas to sculpt and define features
- lighter shades for sculpting and enhancing features
- darker shades for shading and defining
- removable and refillable



INGREDIENTS: Talc, Mica, Bismuth Oxychloride, Boron Nitride, Zinc Stearate, Octyldodecyl Stearoyl Stearate, Silica, Ethylhexyl Palmitate, Phenoxyethanol, Caprylyl Glycol, Sorbic Acid, Tin Oxide. May contain (+/-): CI 77491, CI 77492, CI 77499, CI 77891, CI 15850, CI 45410, CI 19140, CI 15985, CI 77742, CI 77400, CI 77000.



CONTOUR BRUSHES



#23
CHISEL
CONTOUR
VEGAN



#25
DELUXE
BUFFER
VEGAN



#27
ANGLE
CONTOUR
VEGAN



#39
CONTOUR
VEGAN

TIP

Use for contouring,
concealing or
as foundation.





TIP

Medium to deep skin tones: we suggest *Tinted*.



CAMERA READY

FOUNDATION PRIMER

FEATURES

- a makeup base that gives a matte finish
- silicone based primer
- apply before foundation on clean skin
- minimizes fine lines
- perfect for all skin types
- helps makeup last all day — flawless
- Tinted can be used on all skin types; does not deposit colour



INGREDIENTS: Caprylyl Methicone, Glycerin, Aqua, PEG-12 Dimethicone/PPG-20 Crosspolymer, Caprylic/Capric Triglyceride, Phenoxyethanol.



TIP

Apply sparingly in a light tapping motion or with a concealer brush.



PRIME TIME

EYE & LIP PRIMER

FEATURES

- primer for eye and lip area
- prevents lipstick from feathering
- prevents eyeshadow from wearing off or blending unevenly
- perfect for sensitive skin
- perfect for anyone who has trouble with eye makeup smudging or hot flashes
- helps keep shadow on all day



INGREDIENTS: Polybutene, Cera Alba, C15-19 Alkane, Silica, Calcium Aluminum Borosilicate, Ozokerite, Polyethylene, Caprylyl Glycol, Bisabolol, Aqua, Tocopheryl Acetate, Phenoxyethanol, Sorbic Acid. May contain (+/-): CI 77891, CI 77163, CI 77492, CI 77491, CI 77499.

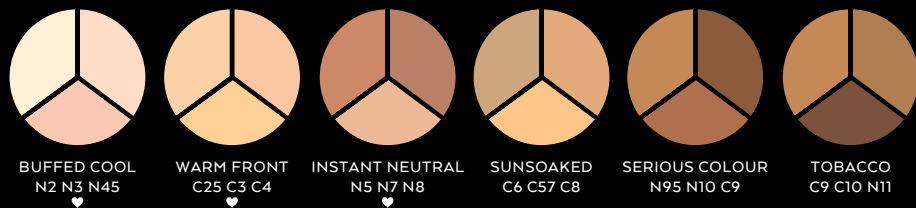


CONCEALER TRIO

COMBINATION

FEATURES

- cream concealer in a trio
- full coverage
- matte finish
- set with powder to increase staying power



INGREDIENTS: Isohexyl Caprate, Ethylhexyl Palmitate, Nylon-12, Paraffin, Quartz, Octyldodecyl Stearate, Ozokerite, Cera Microcristallina, Isostearyl Behenate, Hydrogenated Castor Oil, Silica, PPG-12/SMDI Copolymer, Copernicia Cerifera Cera, Retinyl Palmitate, Tocopherol, Tocopheryl Acetate. May contain (+/-): CI 77891, CI 77492, CI 77491, CI 77499, CI 77007.



HI-DEF BALANCE

COLOUR CORRECTOR

FEATURES

- colour corrects and primes skin
- apply before foundation
- green neutralizes red/rosacea
- a light non-greasy skin colour perfecter that improves skin appearance and balances skin tone

SHADE GUIDE

YELLOW - corrects blue/bruising
 PEACH - corrects dark circles under eyes on medium to dark skin

PINK - highlights and brightens light to medium skin tones
 MAUVE - balances yellow/olive
 GREEN - neutralizes red/rosacea



INGREDIENTS: Aqua, Propylene Glycol, Talc, Paraffinum Liquidum, Isopropyl Myristate, Ethylhexyl Palmitate, Cetyl Esters, Hydrogenated Cottonseed Glyceride, Rosa Centifolia Flower Water, Stearic Acid, Magnesium Aluminum Silicate, Phenoxyethanol, Triethanolamine, Caprylyl Glycol, Chlorphenesin, Dimethicone, Cellulose Gum, Disodium Oleamide PEG-2 Sulfosuccinate, Sodium Dehydroacetate, Polyamino Sugar Condensate, Urea, Isostearic Acid, Benzophenone-4, Wheat Germ Glycerides, Tocopheryl Acetate, Sulfated Castor Oil, Stearoxtrimethylsilane, Stearyl Alcohol, Lithium Stearate. May contain (+/-): CI 77891, CI 77492, CI 77491, CI 77499, CI 77007.



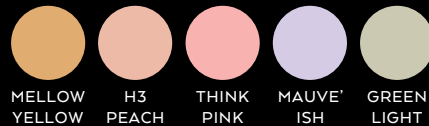
5 WELL COLOUR CORRECTOR

PALLET

FEATURES

- colour correctors in a cream base
- medium coverage
- balances out — colour corrects all skin tones and skin types

OPTICAL ILLUSION



SHADY



INGREDIENTS: Isohexyl Caprate, Ethylhexyl Palmitate, Nylon-12, Paraffin, Quartz, Octyldodecyl Stearate, Ozokerite, Cera Microcristallina, Isostearyl Behenate, Hydrogenated Castor Oil, Silica, PPG-12/SMDI Copolymer, Copernicia Cerifera Cera, Retinyl Palmitate, Tocopherol, Tocopheryl Acetate. May contain (+/-): CI 77891, CI 77492, CI 77491, CI 77499, CI 77015, CI 77742, CI 15985, CI 77288, CI 77289, CI 77007.



TOUCH UP VEIL

MATTE PERFECTION

FEATURES

- lightweight liquid concealer
- medium-full coverage
- water resistant
- matte finish
- neutralizes skin tone
- perfect for all skin types



INGREDIENTS: Aqua, Caprylic/Capric Triglyceride, Cyclopentasiloxane, Glycerin, Cyclohexasiloxane, Triethylhexanoin, Phenyl Trimethicone, Beeswax, Cera Alba, Phenoxyethanol, Silica, Sodium Chloride, Hexyl Laurate, Polyglyceryl-4 Isostearate, Cetyl PEG/PPG-10/1 Dimethicone, Hydrogenated Castor Oil, Triethoxycaprylylsilane, Tocopheryl Acetate, Aloe Barbadensis Leaf Extract. May contain (+/-): CI 77891, CI 77492, CI 77491, CI 77499, CI 77163.



CONCEALER POTS

CREAM FORMULA

FEATURES

- cream concealer
- full coverage
- matte finish
- set with powder to increase staying power
- refills available in blush size pans

TIP

Apply with concealer brush or the heat from your fingertips to give a perfect finish.



C

NEW

NEW

2016

WARM YELLOW TONES

N

NEW

COOL NEUTRAL TONES

H

H1

H2

H3

H4

H5

H6

CC

THINK PINK

MAUVE'ISH

MELLOW YELLOW

GREEN-LIGHT

COLOUR CORRECTORS

INGREDIENTS: Isohexyl Caprate, Ethylhexyl Palmitate, Nylon-12, Paraffin, Quartz, Octyldodecyl Stearate, Ozokerite, Cera Microcristallina, Isostearyl Behenate, Hydrogenated Castor Oil, Silica, PPG-12/SMDI Copolymer, Copernicia Cerifera Cera, Retinyl Palmitate, Tocopherol, Tocopheryl Acetate. May contain (+/-): CI 77891, CI 77492, CI 77491, CI 77499, CI 77015, CI 77742, CI 15985, CI 77288, CI 77289, CI 77007.

LIQUID CONCEALER

UNDER COVER

FEATURES

- liquid concealer
- medium coverage
- quick dry
- water resistant longwear formula
- anti-aging formula with collagen helps reduce puffiness
- non transferable to clothes
- stay put formula



C

2016

WARM YELLOW TONES

N

2016

NEW

COOL NEUTRAL TONES

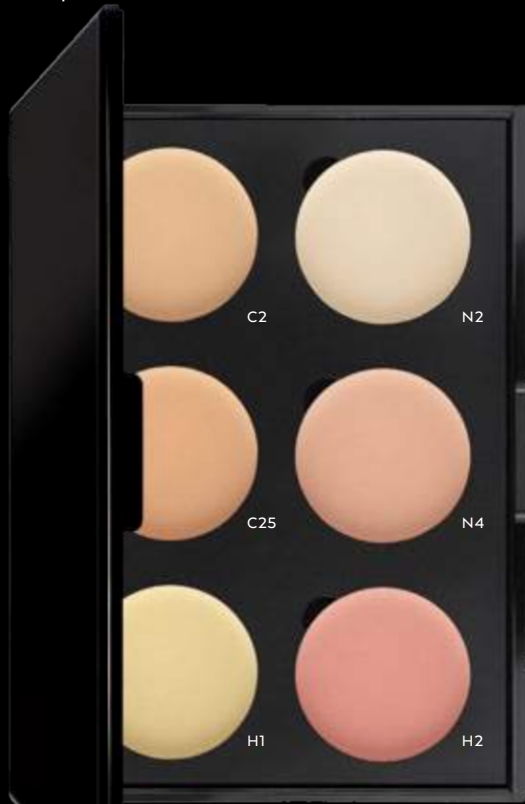
INGREDIENTS: Aqua, Isododecane, Cetyl PEG/PPG-10/1 Dimethicone, Polybutene, Glycerin, Tridecyl Neopentanoate, Dimethicone, Hexyl Laurate, Polyglyceryl-4 Isostearate, Silica, Glyceryl Behenate/Eicosadioate, Dimethicone Crosspolymer, Stearic Acid, Butylene Glycol, Disodium EDTA, Distearidimonium Hectorite, Iodopropynyl Butylcarbamate, Isopropyl Titanium Triisostearate, PEG-4, PEG-4 Dilaurate, PEG-4 Laurate, Phenoxyethanol, Propylene Carbonate, Sodium Chloride, Sodium Hyaluronate, Sodium Lauroyl Glutamate, Sodium PCA, Sodium Polyacrylate, Sorbitan Sesquioleate, Tocopheryl Acetate. May contain (+/-): CI 77491, CI 77492, CI 77499, CI 77891.

COLOUR CORRECTOR PALLETS

6 WELL PRE-SET PALLETS

FEATURES

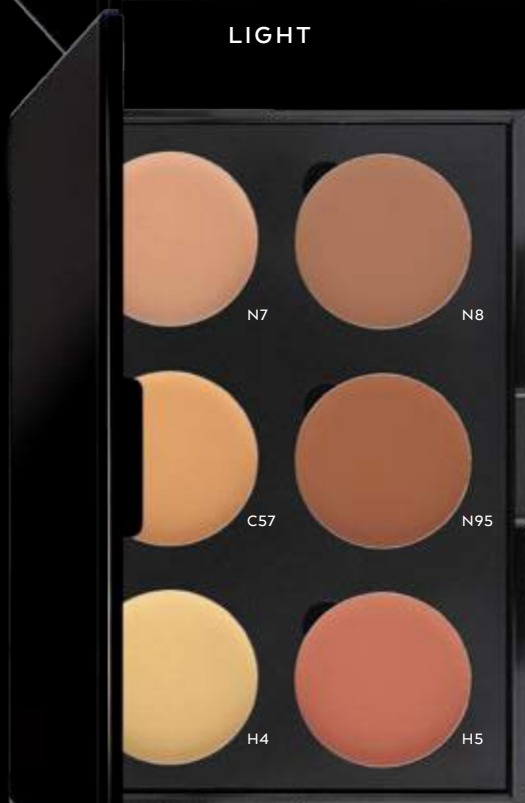
- cream-based formula, ideal for all skin types
- blush size pans — refills available
- blendable formulas to correct and smooth imperfections



LIGHT



MEDIUM

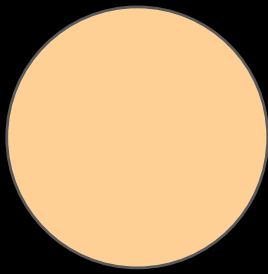


MEDIUM DEEP



DEEP

INGREDIENTS: Isohexyl Caprate, Ethylhexyl Palmitate, Nylon-12, Paraffin, Quartz, Octyldodecyl Stearate, Ozokerite, Cera Microcristallina, Isostearyl Behenate, Hydrogenated Castor Oil, Silica, PPG-12/SMDI Copolymer, Copernicia Cerifera Cera, Retinyl Palmitate, Tocopherol, Tocopheryl Acetate. May contain (+/-): CI 77891, CI 77492, CI 77491, CI 77499, CI 77015, CI 77742, CI 15985, CI 77288, CI 77289, CI 77007.



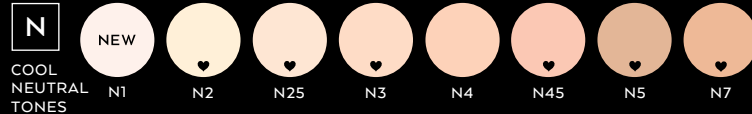
*Blush size refill.

CREAM REFILLS

CREAM CONTOUR AND COLOUR CORRECTOR PALETS

FEATURES

- cream concealer
- full coverage
- matte finish
- set with powder to increase staying power



INGREDIENTS: Isohexyl Caprate, Ethylhexyl Palmitate, Nylon-12, Paraffin, Quartz, Octyldodecyl Stearate, Ozokerite, Cera Microcristallina, Isostearyl Behenate, Hydrogenated Castor Oil, Silica, PPG-12/SMDI Copolymer, Cera Carnauba, Retinyl Palmitate, Tocopherol. May contain (+/-): CI 77891, CI 77492, CI 77491, CI 77499, CI 77007.

FACE MAKEUP

FLAWLESS FINISH

FEATURES

- water based liquid foundation
- light to medium coverage
- contains antioxidant vitamin E
- contains wheat germ to improve skin's elasticity
- perfect for sensitive skin
- non-comedogenic



TIP

Our products do not contain any SPF. We recommend an even application of sunscreen first for best sun damage prevention.



INGREDIENTS: Aqua, Cyclopentasiloxane, Isododecane, Methyl Trimethicone, Cyclohexasiloxane, Glycerin, Polymethyl Methacrylate, Mica, Bis-Vinyl Dimethicone/Dimethicone Copolymer, Cetyl PEG/PPG-10/1 Dimethicone, Phenoxyethanol, Sodium Chloride, Stearic Acid, Aluminum Dimyristate, Dimethicone, Disodium Stearoyl Glutamate, Distearidimonium Hectorite, Ethylhexylglycerin, Glyceryl Stearate, Hexadecene, Hydrogenated Lecithin, Magnesium Stearate, PEG-100 Stearate, Pentaerythrityl Tetra-Di-T-Butyl Hydroxyhydrocinnamate, Potassium Sorbate, Triethoxycaprylsilane. May contain (+/-): CI 77491, CI 77492, CI 77499, CI 77891.



CREAM FOUNDATION

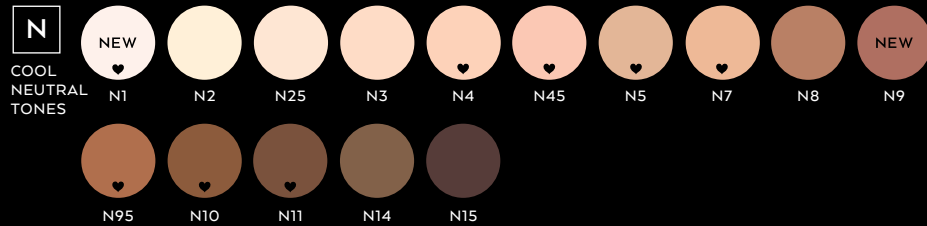
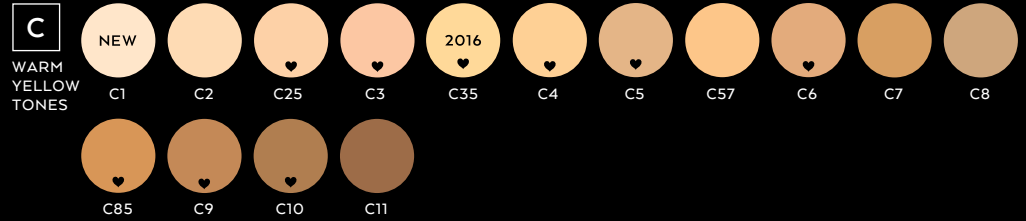
COMPACT

FEATURES

- cream-based foundation in a compact
- full coverage
- matte finish
- for those with dry skin, we recommend to use cream foundation with camera ready to increase slip

TIP

Apply with foundation or stipple brush and set with dual powder for full coverage.



INGREDIENTS: Isohexyl Caprate, Ethylhexyl Palmitate, Nylon-12, Paraffin, Quartz, Octyldodecyl Stearate, Ozokerite, Cera Microcristallina, Isostearyl Behenate, Hydrogenated Castor Oil, Silica, PPG-12/SMDI Copolymer, Copernicia Cerifera Cera, Retinyl Palmitate, Tocopherol, Tocopheryl Acetate. May contain (+/-): CI 77891, CI 77492, CI 77491, CI 77499, CI 77015.

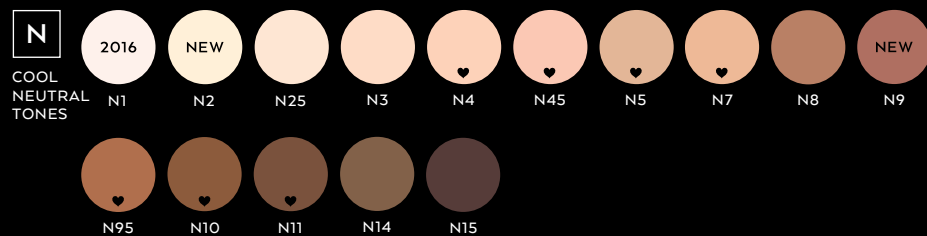
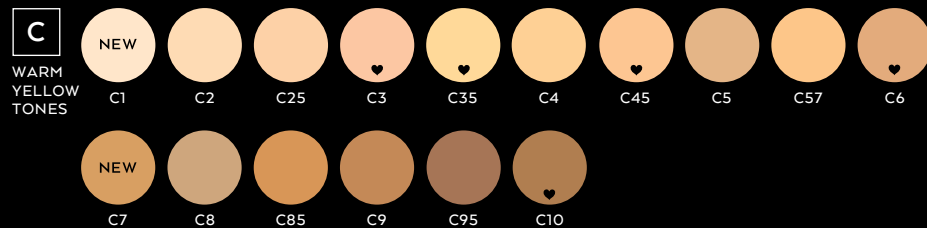


DUAL POWDER FOUNDATION

FULL COVERAGE FOUNDATION

FEATURES

- foundation and powder all in one
- medium to full coverage
- use as a foundation with brush or sponge
- use for touch ups
- will not settle into fine lines
- use on top of any liquid or cream foundation to set or add coverage
- use dampened sponge for full coverage foundation (for oily skin)



INGREDIENTS: Talc, Mica, Dimethicone, Nylon-12, Aluminum Dimyristate, Zinc Stearate, Ascorbyl Palmitate, Imidazolidinyl Urea, Tocopherol. May contain (+/-): CI 77007, CI 77288, CI 77491, CI 77492, CI 77499, CI 77891.

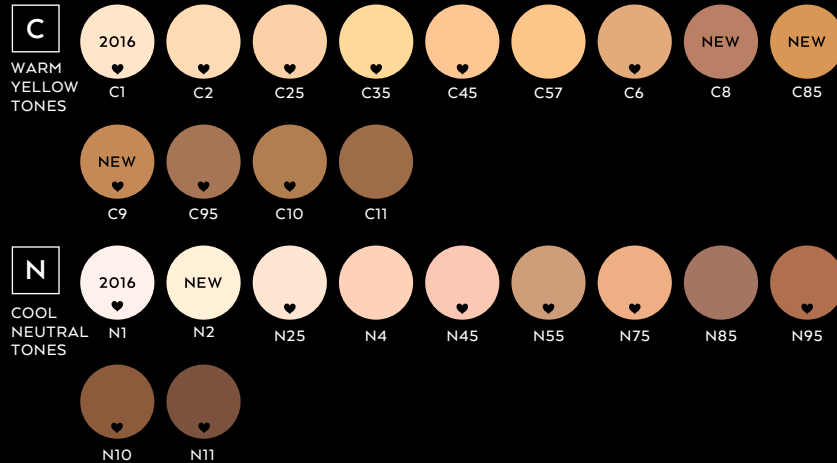


HI-DEF FOUNDATION

LIQUID

FEATURES

- medium to full coverage
- best-selling formula
- dewy finish — not matte
- non-transferable — won't rub off on clothes
- anti-aging formula contains collagen which helps with puffiness
- water resistant



TIP

For added coverage set with co-ordinating dual powder shade or loose powder shade.



INGREDIENTS: Aqua, Isododecane, Cetyl PEG/PPG-10/1 Dimethicone, Polybutene, Glycerin, Dimethicone, Dimethicone Crosspolymer, Tridecyl Neopentanoate, Hexyl Laurate, Polyglyceryl-4 Isostearate, Silica, Glyceryl Behenate/Eicosadioate, Stearic Acid, Butylene Glycol, Cyclotetrasiloxane, Disodium EDTA, Disteardimonium Hectorite, Iodopropynyl Butylcarbamate, Isopropyl Titanium Triisostearate, PEG-4, PEG-4 Dilaurate, PEG-4 Laurate, Phenoxyethanol, Propylene Carbonate, Sodium Chloride, Sodium Hyaluronate, Sodium Lauroyl Glutamate, Sodium PCA, Sodium Polyacrylate, Sorbitan Sesquioleate, Tocopheryl Acetate. May contain (+/-): CI 77491, CI 77492, CI 77499, CI 77891.

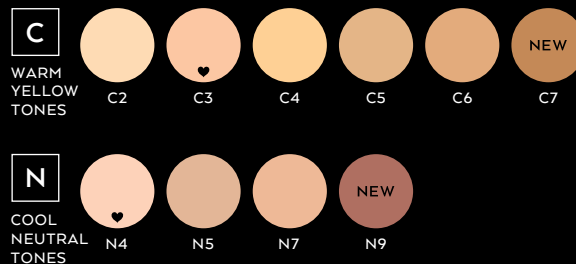


MOUSSE FOUNDATION

PERFECT BALANCE

FEATURES

- cream to powder
- light velvety texture
- light-medium coverage
- matte finish
- visibly reduces appearance of fine lines
- powder is optional
- non-comedogenic



INGREDIENTS: Cyclopentasiloxane, Dimethicone Crosspolymer, Isononyl Isononanoate, Cyclomethicone, Mica, Silica, Phenoxyethanol, Dimethicone, Phenyl Trimethicone, Sodium Myristoyl Sarcosinate, Isopropyl Titanium Triisostearate, Tocopheryl Acetate. May contain (+/-): CI 77891, CI 77492, CI 77491, CI 77499.



BB CREAM

TINTED MOISTURIZER

FEATURES

- part skin care, part makeup
- 100% amazing
- hydrating, protecting with sheer, radiant coverage
- provides superior skin protection that may prevent premature skin aging and darkening
- produces a very natural, no makeup look



INGREDIENTS: Aqua, Squalane, Glyceryl Stearate, Glycerin, Benzophenone-3, Ethylhexyl Methoxycinnamate, Ethylhexyl Salicylate, Butylene Glycol, PEG-40 Stearate, Niacinamide, Octyldodecyl Stearoyl Stearate, Glycerin (and) Water (and) Butylene Glycol (and) Carbomer (and) Polysorbate 20 (and) Palmitoyl Oligopeptide (and) Palmitoyl Tetrapeptide-7, Phenyl Trimethicone, Phenoxyethanol, Ammonium Acryloyldimethyltaurate/VP Copolymer, Cetyl Alcohol, Dimethicone, Lecithin, Polymethylsilsesquioxane, Sodium Hyaluronate, Chlorphenesin, Water/Butylene Glycol/Laminaria Saccharina Extract, Xanthan Gum, Carthamus Tinctorius (Safflower) Seed Oil, Ethylhexyl Palmitate, Aloe Barbadensis Leaf Extract, Sodium Dehydroacetate, Aluminum Hydroxide, Stearic Acid, Silica, Tocopheryl Acetate, BHT, Anthemis Nobilis Flower Extract, Disodium EDTA, Cucumis Sativus (Cucumber) Fruit Extract, Panax Ginseng Root Extract, Ascorbyl Palmitate, Retinyl Palmitate.
May contain (+/-): CI 77891, CI 77492, CI 77491, CI 77499.

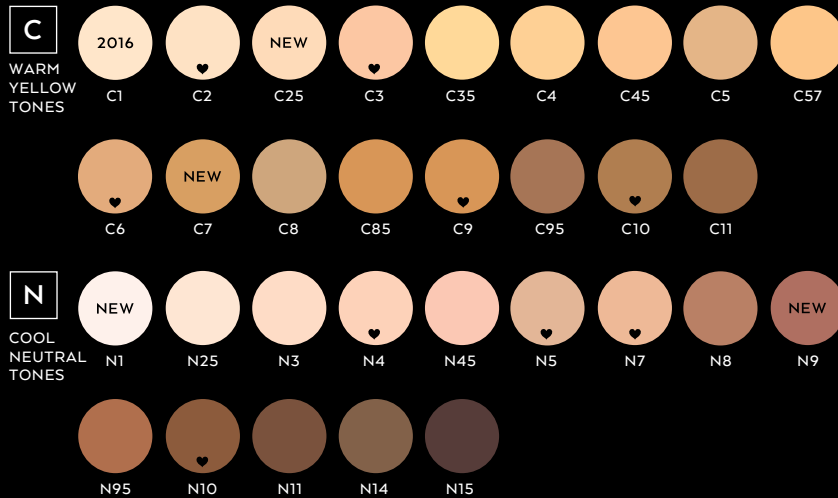


LOOSE POWDER

TRANSLUCENT

FEATURES

- lightweight powder that removes shine or oil without buildup
- matches skin tone without buildup
- mattifies skin
- contains oil absorbing powders
- will not settle into fine lines



INGREDIENTS: Talc, Zinc Stearate, Boron Nitride, Caprylyl Glycol, Mica, Octyldodecyl Stearoyl Stearate, Phenoxyethanol, Sorbic Acid.
May contain (+/-): CI 15985, CI 77491, CI 77492, CI 77499, CI 77742, CI 77891.

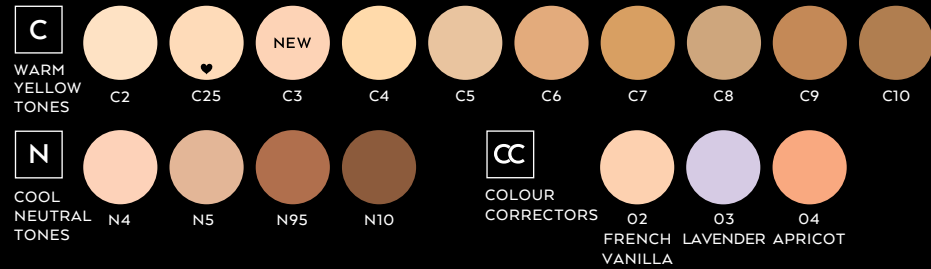


TRANSLUCENT PRESSED

P O W D E R

FEATURES

- removes oil and shine without buildup
- totally translucent
- blots oil without cakiness
- weightless and invisible
- will not settle into fine lines



INGREDIENTS: Talc, Calcium Carbonate, Tricaprylin, Imidazolidinyl Urea, Ascorbyl Palmitate. May contain (+/-): CI 77491, CI 77492, CI 77499, CI 77891.



HI-DEF POWDER

L O O S E

FEATURES

- velvet feel loose powder
- creates matte finish
- for all skin tones
- removes oil without cakiness
- 100% invisible
- colour correcting



INGREDIENTS: Talc, Polymethylsilsesquioxane, Silica, Triethylhexanoin, Zinc Stearate, Phenoxyethanol, Imidazolidinyl Urea, Caprylyl Glycol, Sodium Dehydroacetate, Ascorbyl Palmitate.



HI-DEF INVISIBLE BLOTTING

P O W D E R

FEATURES

- removes oil and shine without buildup
- no coverage
- totally translucent
- blots oil without cakiness
- weightless and invisible
- will not settle into fine lines



INGREDIENTS: Talc, Polymethylsilsesquioxane, Silica, Triethylhexanoin, Zinc Stearate, Phenoxyethanol, Imidazolidinyl Urea, Caprylyl Glycol, Sodium Dehydroacetate, Ascorbyl Palmitate.

FOUNDATION & CORRECTOR FINDER

| C WARM YELLOW TONES | C1 | C2 | C25 | C3 | C35 | C4 | C45 | C5 | C57 | C6 | C7 | C8 | C85 | C9 | C95 | C10 | C11 |
|---|------|----|-----|-----|-----|----|-----|----|-----|----|-----|-----|-----|-----|-----|-----|-----|
| HI-DEF FOUNDATION LIQUID | 2016 | ♥ | ♥ | | ♥ | | ♥ | | | ♥ | | NEW | NEW | NEW | ♥ | ♥ | |
| LIQUID CONCEALER UNDER COVER | | ♥ | ♥ | | ♥ | | ♥ | | | | | NEW | NEW | NEW | ♥ | ♥ | |
| CREAM FOUNDATION COMPACT | 2016 | | ♥ | ♥ | | ♥ | | ♥ | | ♥ | | | | ♥ | | ♥ | |
| CONCEALER POTS | 2016 | ♥ | ♥ | ♥ | | ♥ | | | | | | | | | | | |
| FACE FOUNDATION FLAWLESS FINISH | | ♥ | ♥ | ♥ | | ♥ | | | | ♥ | NEW | | NEW | NEW | | | |
| DUAL POWDER FULL COVERAGE FOUNDATION | 2016 | | | ♥ | ♥ | | ♥ | | | ♥ | NEW | | | | | ♥ | |
| LOOSE POWDER TRANSLUCENT | 2016 | ♥ | | ♥ | | ♥ | | | | ♥ | NEW | | | ♥ | | ♥ | |
| TRANSLUCENT PRESSED POWDER | | | ♥ | NEW | | | | | | | | | | | | | |
| MOUSSE FOUNDATION PERFECT BALANCE | | | | ♥ | | | | | | | NEW | | | | | | |
| MINERAL FOUNDATION PRESSED POWDER COMPACT | | | | | | | | | | | | | | | | | |
| MINERAL FOUNDATION LOOSE POWDER JAR | | | | | | | | | | | | | | | | | |
| TOUCH UP VEIL MATTE PERFECTION | | | | | | | | | | | | | | | | | |

| N COOL NEUTRAL TONES | N1 | N2 | N25 | N3 | N4 | N45 | N5 | N55 | N7 | N75 | N8 | N85 | N9 | N95 | N10 | N11 | N14 | N15 | BRIGHT-ENER |
|---|------|-----|-----|----|----|-----|----|-----|----|-----|----|-----|-----|-----|-----|-----|-----|-----|-------------|
| HI-DEF FOUNDATION LIQUID | 2016 | NEW | ♥ | | | ♥ | | ♥ | | ♥ | | | | ♥ | ♥ | ♥ | | | |
| LIQUID CONCEALER UNDER COVER | 2016 | NEW | ♥ | | | ♥ | | ♥ | | | | | | | | ♥ | | | |
| CREAM FOUNDATION COMPACT | NEW | NEW | | | ♥ | ♥ | ♥ | | ♥ | | | | NEW | ♥ | ♥ | ♥ | | | |
| CONCEALER POTS | NEW | NEW | ♥ | ♥ | ♥ | ♥ | ♥ | | | | | | NEW | | | | | | |
| FACE FOUNDATION FLAWLESS FINISH | | NEW | | | | ♥ | ♥ | | ♥ | | | | NEW | | ♥ | | | | |
| DUAL POWDER FULL COVERAGE FOUNDATION | NEW | NEW | | | ♥ | | ♥ | | ♥ | | | | NEW | ♥ | ♥ | ♥ | | | |
| LOOSE POWDER TRANSLUCENT | NEW | | | | ♥ | | ♥ | | ♥ | | | | NEW | | ♥ | | | | |
| TRANSLUCENT PRESSED POWDER | | | | | ♥ | | | | | | | | | | | | | | |
| MOUSSE FOUNDATION PERFECT BALANCE | | | | | ♥ | | | | | | | | NEW | | | | | | |
| MINERAL FOUNDATION PRESSED POWDER COMPACT | | | | | | | | | | | | | | | | | | | |
| MINERAL FOUNDATION LOOSE POWDER JAR | | | | | | | | | | | | | NEW | | | | | | |
| TOUCH UP VEIL MATTE PERFECTION | | | | | | | | | | | | | | | | | | | |